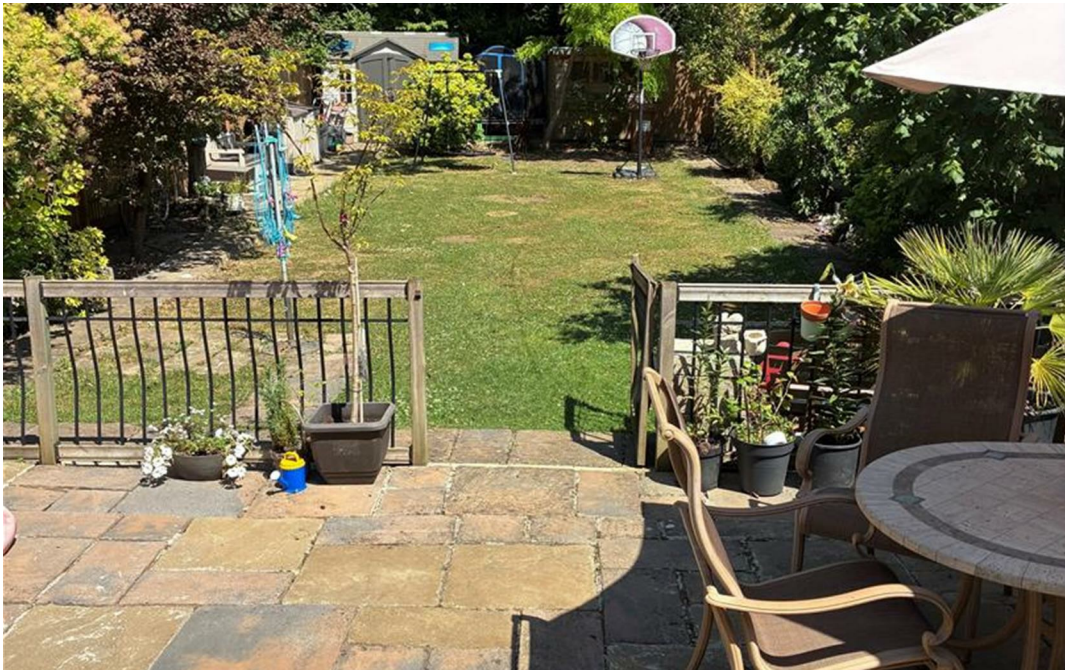
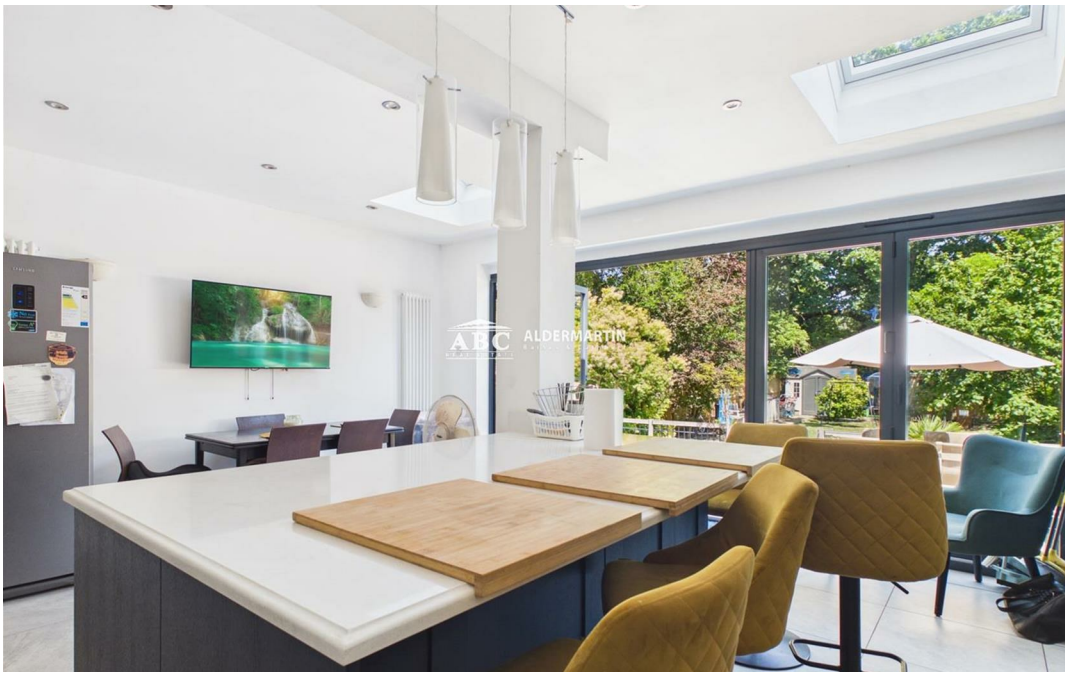


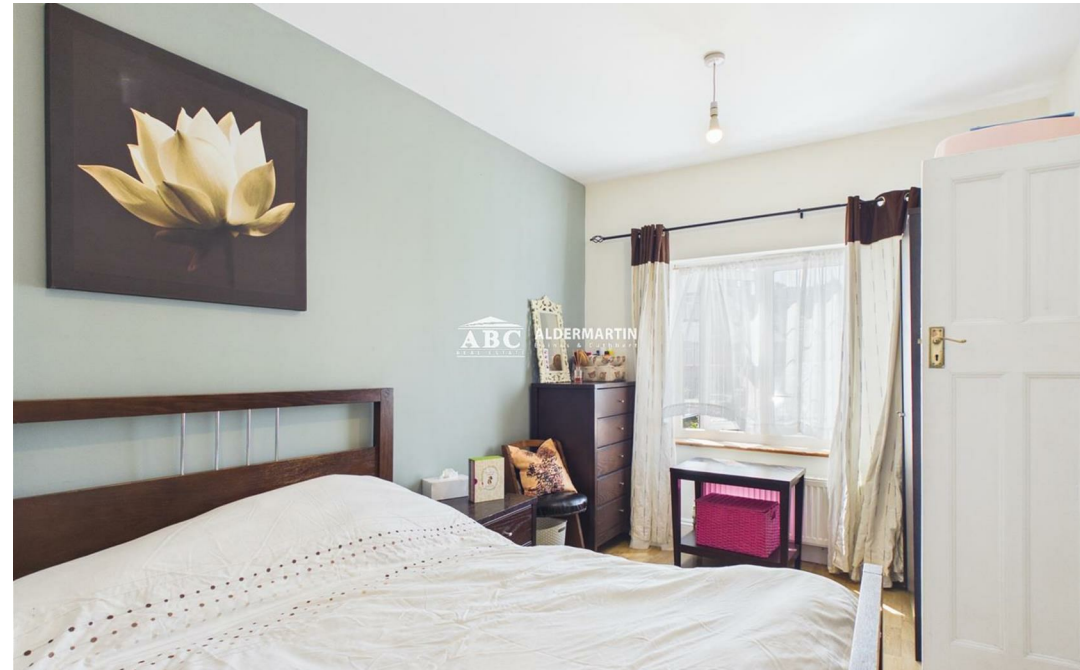


**WHITCHURCH GARDENS, CANONS PARK,
EDGWARE HA8 8PD**

**£999,950
Freehold**







- EXTENDED SEMI DETACHED HOUSE
- COUNCIL TAX BAND E - EPC RATING C
- TWO RECEPTION ROOMS

- SIX BEDROOMS +THREE BATHROOMS
- LONG MATURE REAR GARDEN
- EXTENDED + OFF STREET PARKING

- POPULAR AND QUIET LOCATION
- HUGE MODERN KITCHEN DINER
- POTENTIAL TO FURTHER EXTEND STPP

Located in the popular Whitchurch Gardens, Canons Park,, this deceptively spacious house presents an excellent opportunity for those seeking a comfortable and inviting home. The property is situated in a peaceful neighbourhood, offering a perfect blend of suburban tranquillity and convenient access to local amenities. With six bedrooms, three bathrooms, a huge kitchen diner, plus two further reception rooms, the property is designed to provide a warm and welcoming atmosphere, ideal for growing families or those who are looking for a serene living environment. The surrounding area boasts a variety of parks, shops, and schools, making it an attractive choice for families and professionals alike.

Canons Park is known for its beautiful green spaces, perfect for leisurely strolls or outdoor activities. Additionally, the excellent transport links in the vicinity ensure that commuting to central London and other key areas is both easy and efficient.

This house is not just a property; it is a home, where memories can be made and cherished. With its prime location and the potential for further extension or personalisation, this home is a wonderful opportunity for anyone looking to settle in a vibrant community. We invite you to explore the possibilities that await in this lovely house.

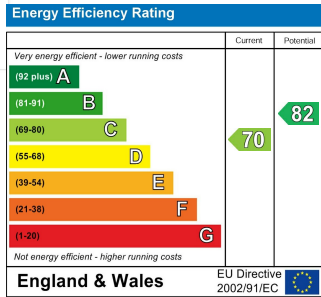


Approximate total area^m
1536 ft²

(1) Excluding balconies and terraces

Calculations reference the RICS IPMS 3C standard. Measurements are approximate and not to scale. This floor plan is intended for illustration only.

GIRAFFE360



ABC Hendon Sales

020 8621 4000

www.abcestates.co.uk - sales@abcestates.co.uk

