

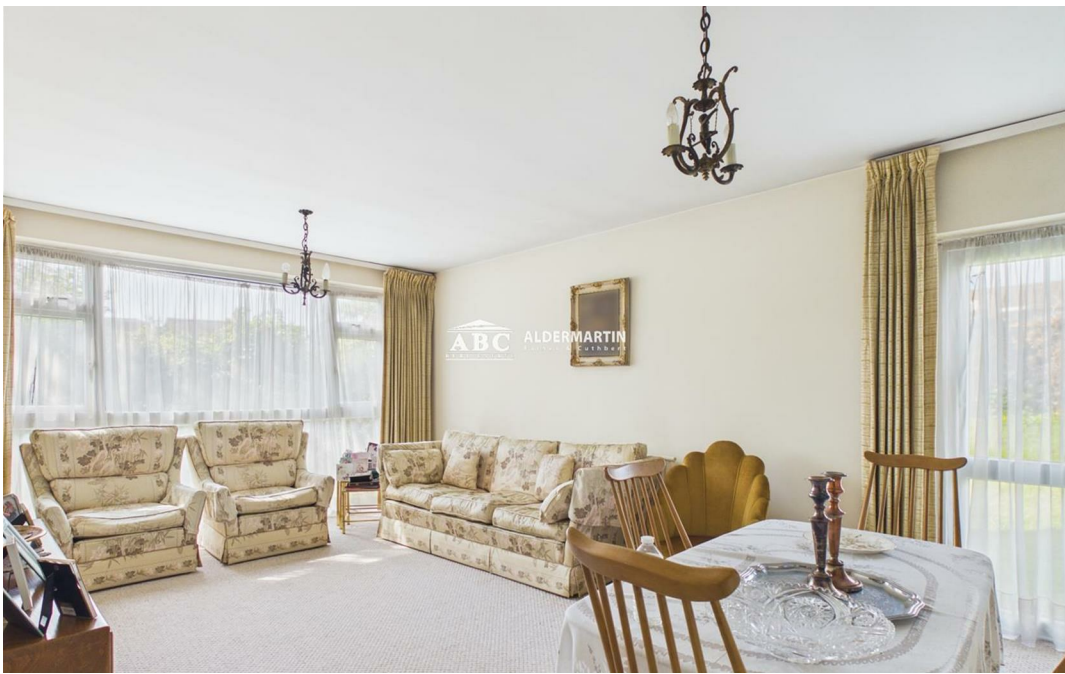


DUDLEY HOUSE

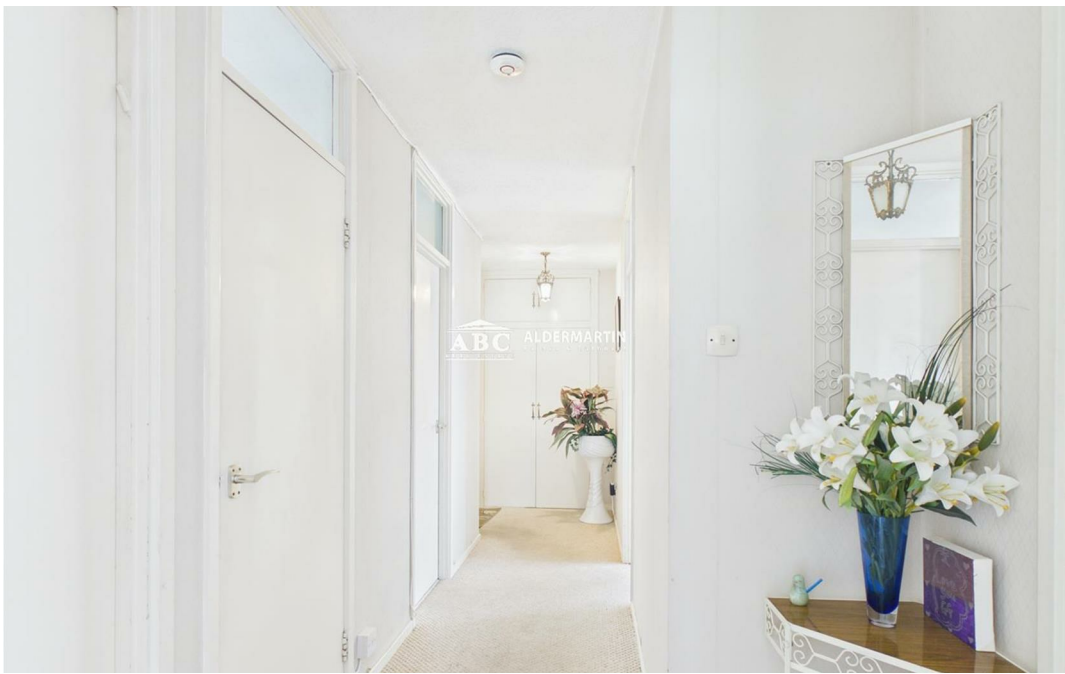
Stratton Close, Edgware HA8 6PL

£384,950

**Leasehold - Share of
Freehold**







- GROUND FLOOR
- GARAGE + COMMUNAL GARDENS

- TWO DOUBLE BEDROOMS
- COUNCIL TAX BAND D + EPC TBC

- QUIET SURROUNDINGS
- SHARE OF FREEHOLD

This charming flat is located on Stratton Close, of the popular Whitchurch Gardens. This well-maintained property, was built in 1982, and offers a comfortable living space that is perfect for individuals or small families seeking a convenient and pleasant home.

The flat features a spacious reception room, which looks out over the communal gardens. With two double bedrooms, a separate fitted kitchen and a bathroom, one is ensured that daily routines can be both comfortable and efficient.

Situated in a peaceful neighbourhood, the flat benefits from its proximity to local amenities, including shops, schools, and parks, making it a practical choice for everyday living. Edgware is known for its excellent transport links, allowing for easy access to central London and beyond, which is perfect for commuters.

This flat combines a convenient location with a homely atmosphere. Whether you are looking to invest or find a new place to call home, it is certainly worth considering. Do not miss the opportunity to view it.



ABC Hendon Sales

020 8621 4000

www.abcestates.co.uk - sales@abcestates.co.uk

