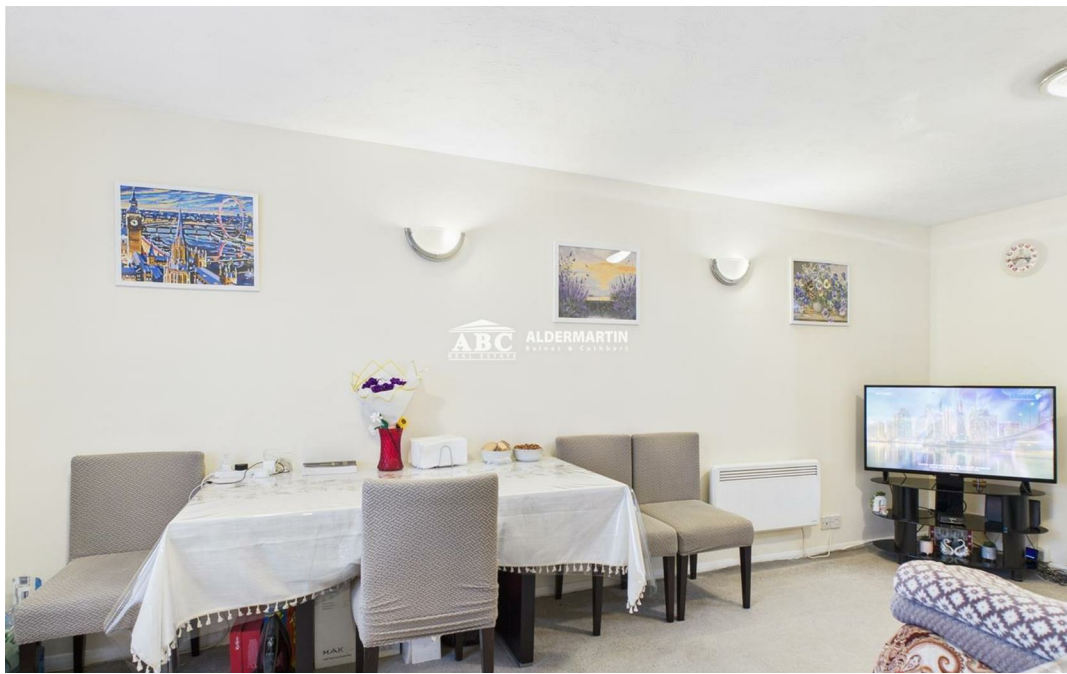
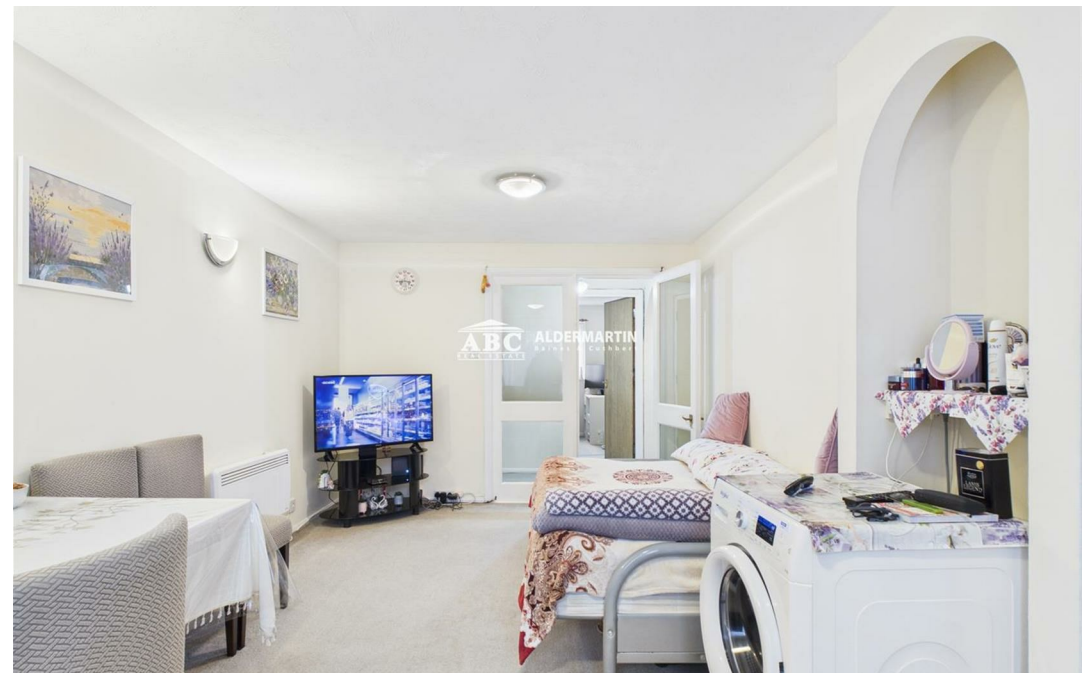
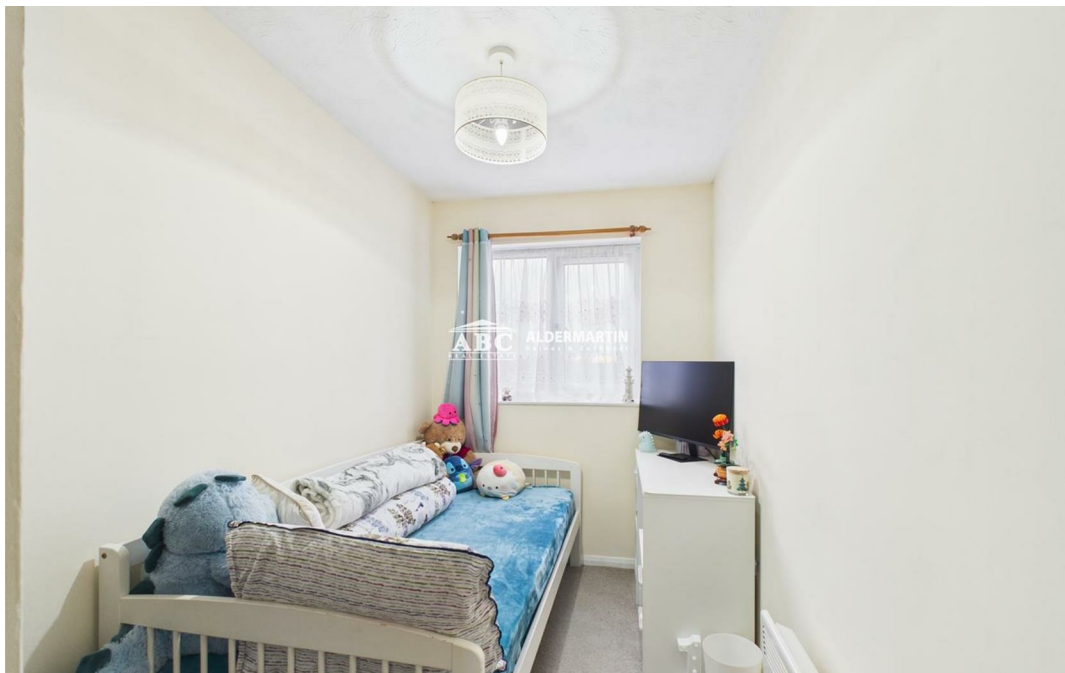




Gatting Close, Edgware MK44 3AA

£285,000
Leasehold





- FIRST FLOOR FLAT
- QUIET LOCATION
- IDEAL INVESTMENT

- TWO BEDROOMS
- EPC RATING C
- PERFECT FOR FIRST TIME BUYERS

- PARKING
- COUNCIL TAX BAND C (BARNET)
- SEPARATE FITTED KITCHEN



Situated in Gatting Close, off Pavilion Way, Edgware, this delightful two-bedroom first floor flat presents an excellent opportunity for those seeking a comfortable and inviting home. The property boasts a well-thought-out layout, perfect for a growing family.

The location of Gatting Close is exceptionally convenient, as it offers easy access to local amenities, including shops, schools, and parks. There is a walk-through to Watling Avenue, which is only minutes from the Northern Line Tube Station. making it convenient for commuting to central London.

This property provides an opportunity for you to make it your own, whether you wish to modernise it or simply enjoy it as it is. With its prime location and affordable price, this flat is sure to attract interest from a variety of buyers. Do not miss the chance to view it soon.

Energy Efficiency Rating		
	Current	Potential
Very energy efficient - lower running costs		
(92 plus) A		
(81-91) B		
(69-80) C		
(55-68) D		
(39-54) E		
(21-38) F		
(1-20) G		
Not energy efficient - higher running costs		
England & Wales		
EU Directive 2002/91/EC		