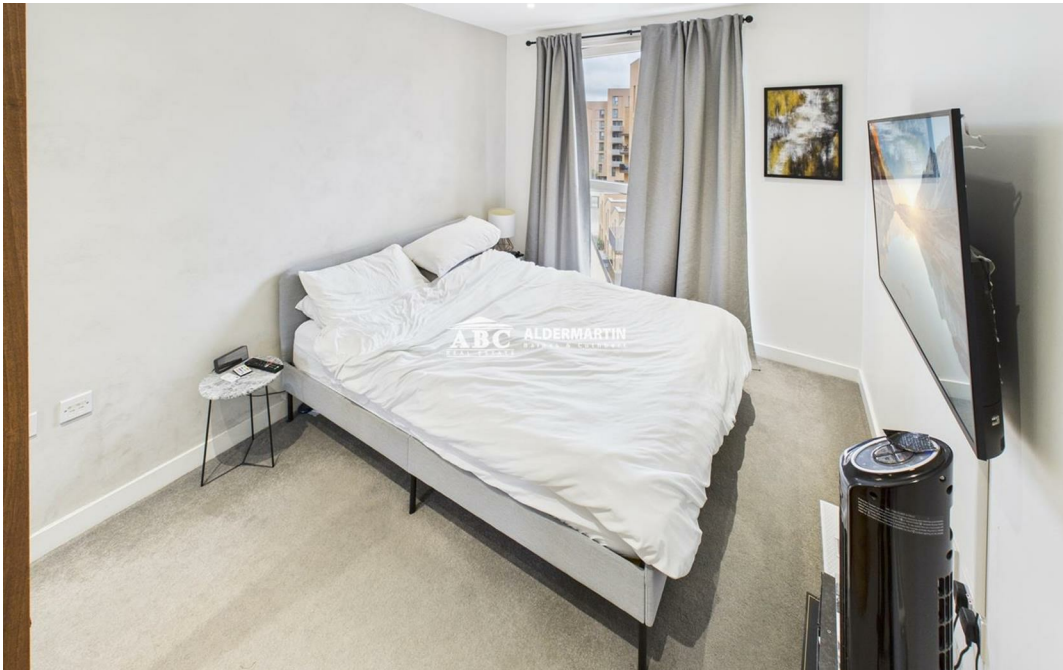
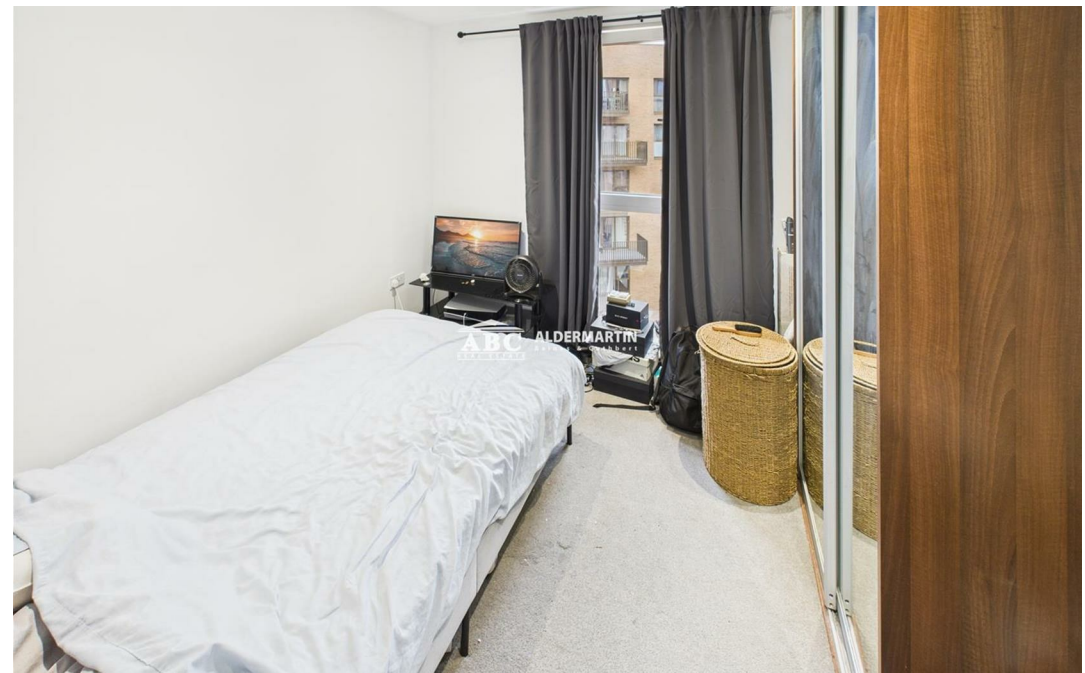
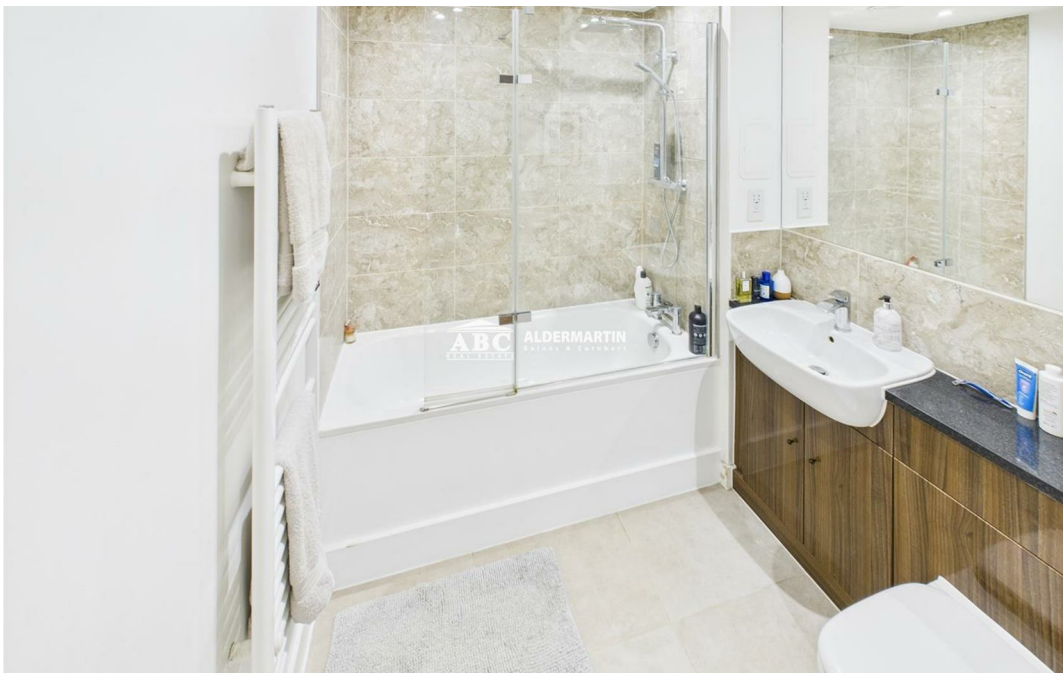




**Moorhen Drive, London NW9 7DL**

**£450,000  
Leasehold**





- 2 DOUBLE BEDROOMS
- ENSUITE
- COUNCIL TAX D & EPC D
- TOP FLOOR

- BALCONY OVERLOOKING LONDON'S SKYLINE
- GUEST WC
- ON-SITE GYM, CONCIERGE & EVENING SECURITY

- MODERN KITCHEN
- 10 MINUTE WALK FROM HENDON THAMESLINK RAILWAY
- PARKING SPACE

ABC Estates are proud to present this stunning Top floor 2 bedroom flat overlooking a gorgeous view of the Brent Reservoir.

Comprising of a 2 double bedroom, ensuite, guest WC, spacious reception area, modern fully-fitted kitchen and balcony, this presents a fantastic opportunity for families & couples.

Within the building of this luxury block, there is an on-site gymnasium alongside parking, concierge and evening security.

In an ideal location, 5 minute walk from Hendon Station Thameslink and a short walk to nearby amenities, businesses and shops, this property is in a great location perfect for a couple, family or as an investment!

Viewing highly recommended!

In accordance with the 1991 Property Misdescriptions Act, these details, photographs, and the floor plan have been prepared in good faith and as a general guide, not a statement of fact. We have not carried out a survey and the services, appliances and specific fittings have not been tested. Measurements are approximate and where possible taken to the widest point.

Any information regarding lease details, service charges, ground rent etc. have been supplied by our client and to the best of our knowledge is correct. However, we strenuously recommend that you ask your solicitor to ratify it.

For details of our Affiliations, Redress Schemes, Fees, and Complaints Procedure, please visit [www.abcestates.co.uk](http://www.abcestates.co.uk)



**ABC Hendon Sales**  
**020 8203 4567**

