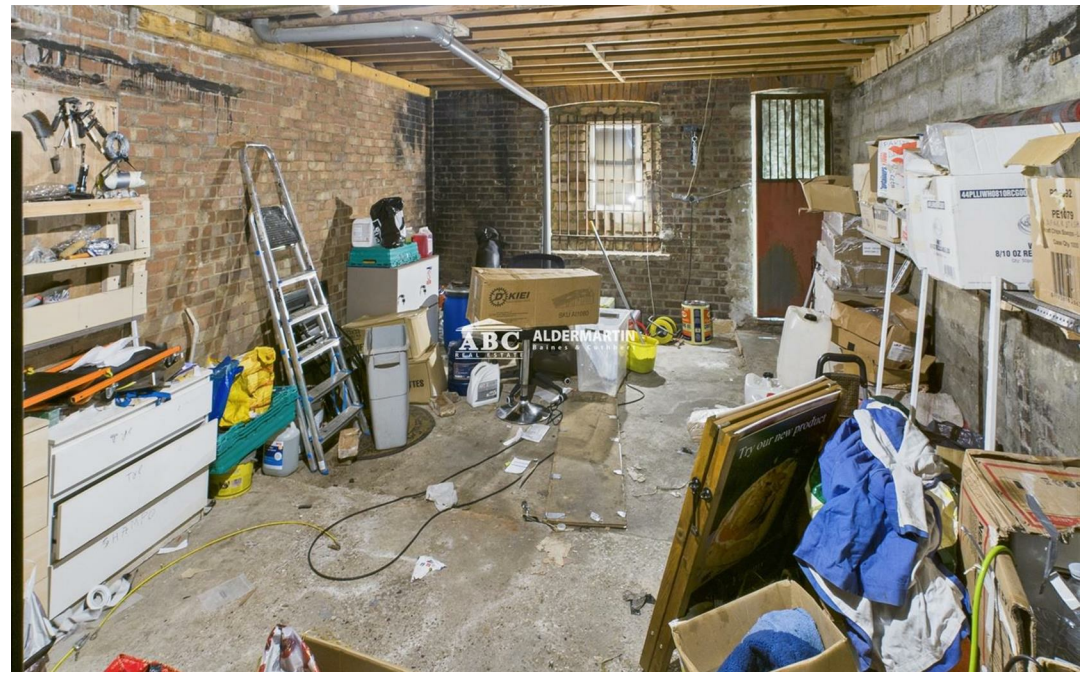




**Wellington Terrace, Turnpike Lane N8**

**£19,000 (From)  
Per Annum**









- 965 SQUARE FEET
- PLENTY OF STORAGE SPACE

- EXCELLENT LOCATION
- OPPOSITE TURNPIKE STATION

- BUSY FOOT-TRAFFIC
- £19,000.00 P.A

A great opportunity to lease this shop front situated on one of N8's most sought after high streets.

Benefiting from 965 square feet in a thriving location with plenty of foot traffic, opposite Turnpike Lane Station, this commercial property presents a fantastic opportunity to establish a business.

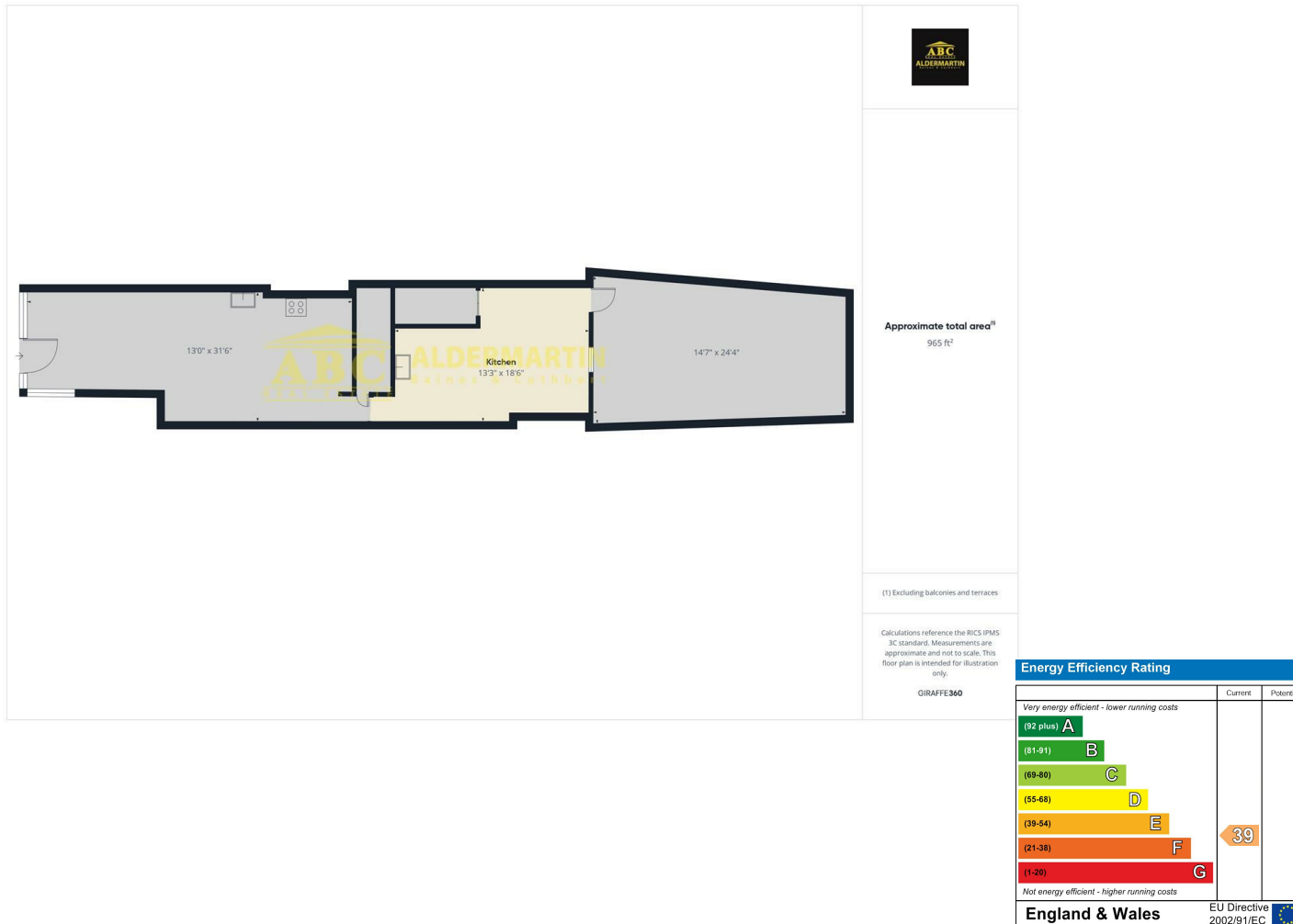
Premium of £40,000  
£19,000.00 rent p.a

Viewing Recommended!

In accordance with the 1991 Property Misdescriptions Act, these details, photographs, and the floor plan have been prepared in good faith and as a general guide, not a statement of fact. We have not carried out a survey and the services, appliances and specific fittings have not been tested. Measurements are approximate and where possible taken to the widest point.

Any information regarding lease details, service charges, ground rent etc. have been supplied by our client and to the best of our knowledge is correct.

However, we strenuously recommend that you ask your solicitor to ratify it. For details of our Affiliations, Redress Schemes, Fees, and Complaints Procedure, please visit [www.abcestates.co.uk](http://www.abcestates.co.uk)



**ABC Hendon Lettings**  
**020 8203 4567**

