



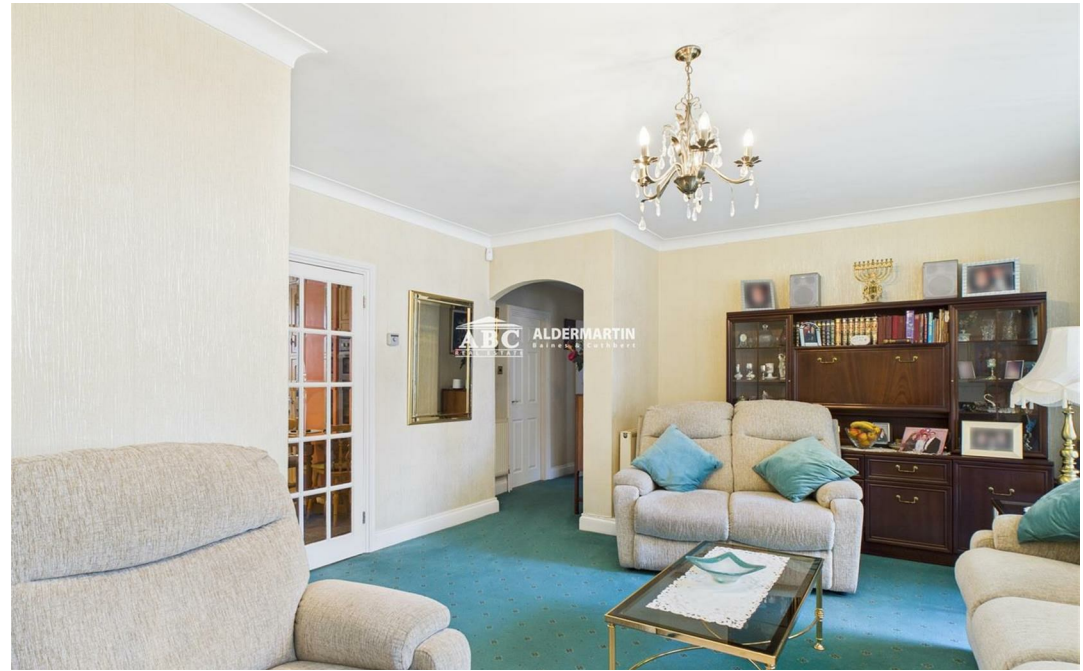
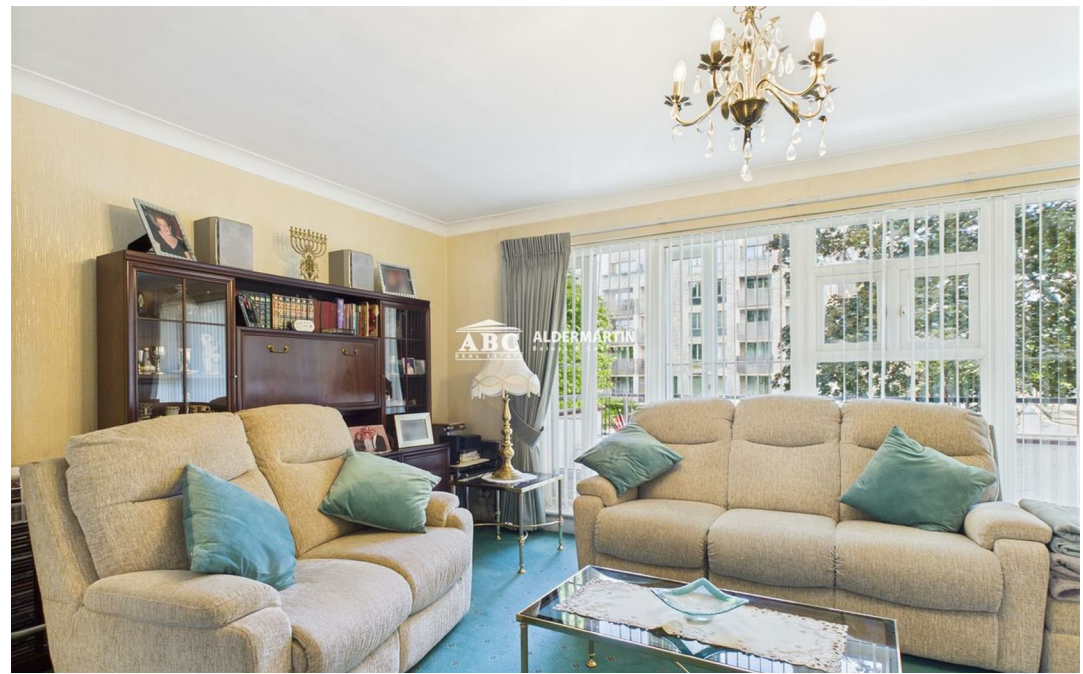
**Stonegrove, Edgware HA8 8AD**

**£399,950**  
**Leasehold**

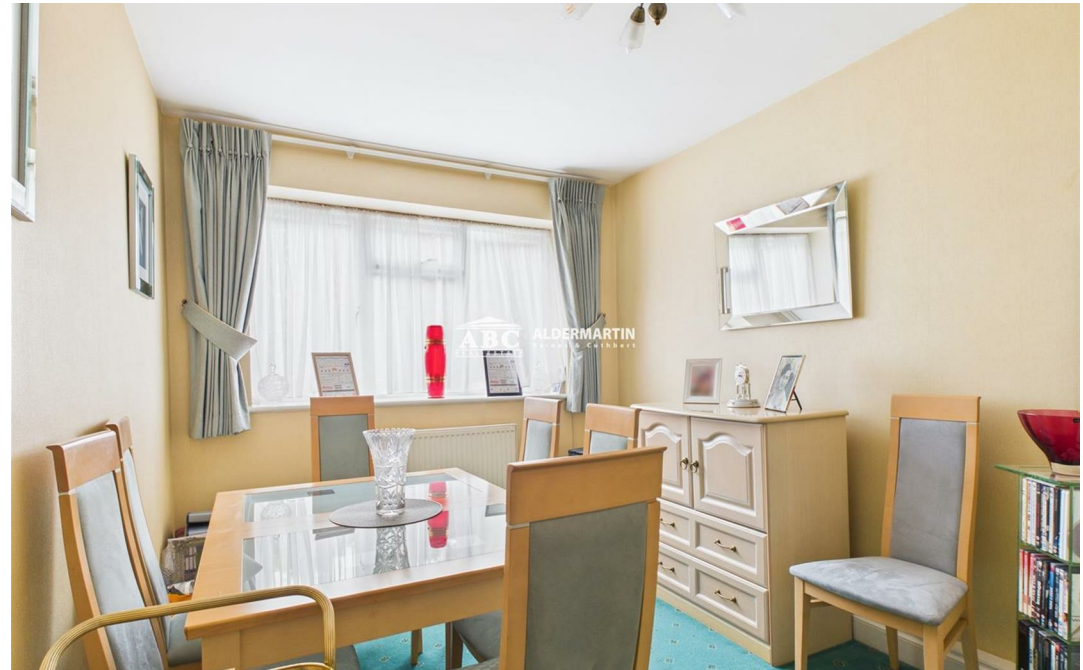












- FIRST FLOOR FLAT
- BALCONY
- PERFECT FIRST TIME PURCHASE OR INVESTMENT

- TWO DOUBLE BEDROOMS
- SEPARATE FITTED KITCHEN
- MOTORWAY LINKS CLOSE BY,

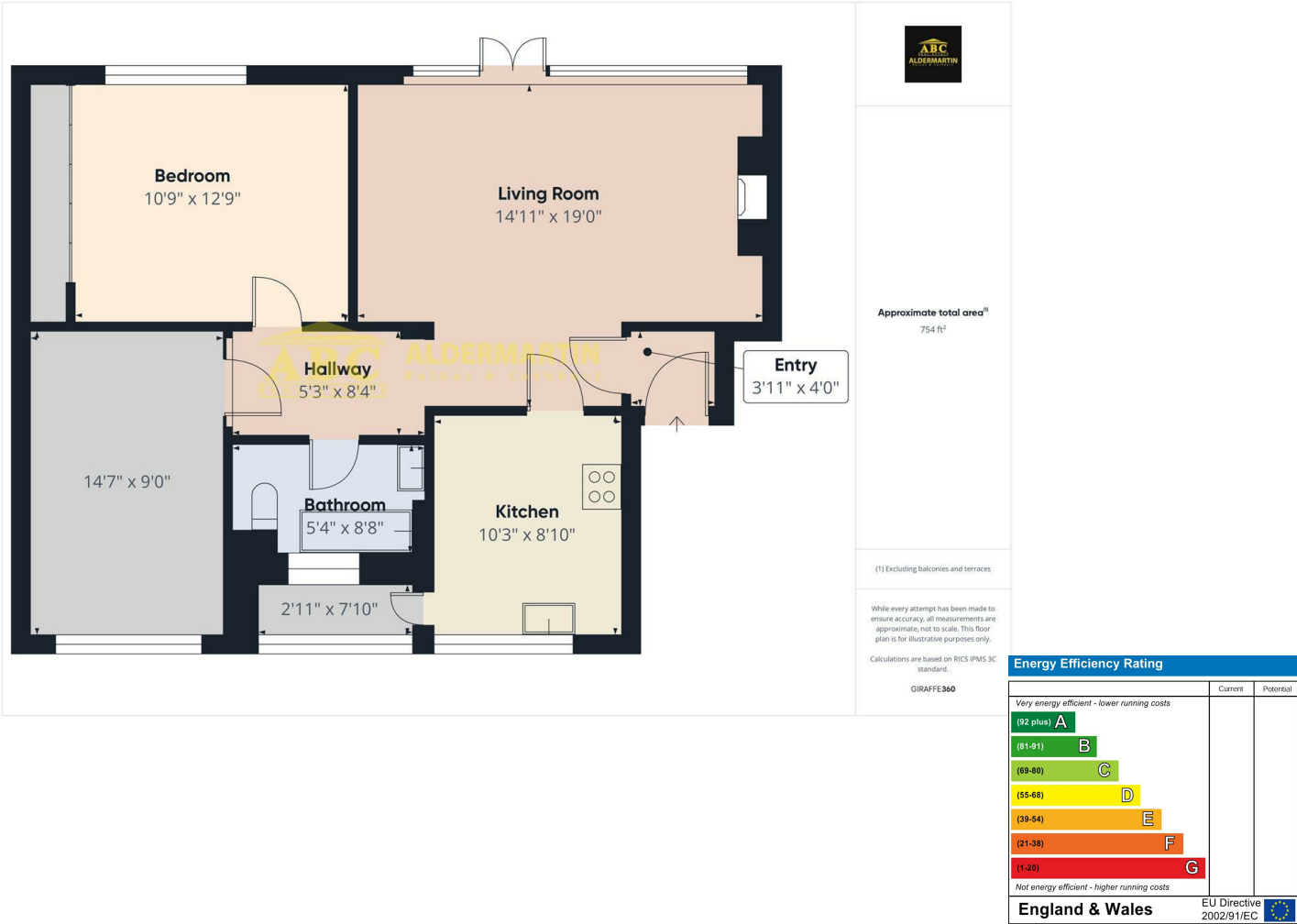
- CLOSE TO EDGWARE AND STANMORE
- DOUBLE GLAZED
- GARAGE + COMMUNLA GARDENS

New to the market, this first floor flat is situated midway between Stanmore and Edgware, and benefits from all of the local amenities which both areas have to offer.

It comprises a good sized lounge, two double bedrooms, a separate fitted "eat in" kitchen, a bathroom, a balcony, communal gardens and a garage.

It is offered in good decorative order and would make an ideal first time purchase or investment.

SOLE AGENTS



ABC Hendon Sales  
020 8203 4567

