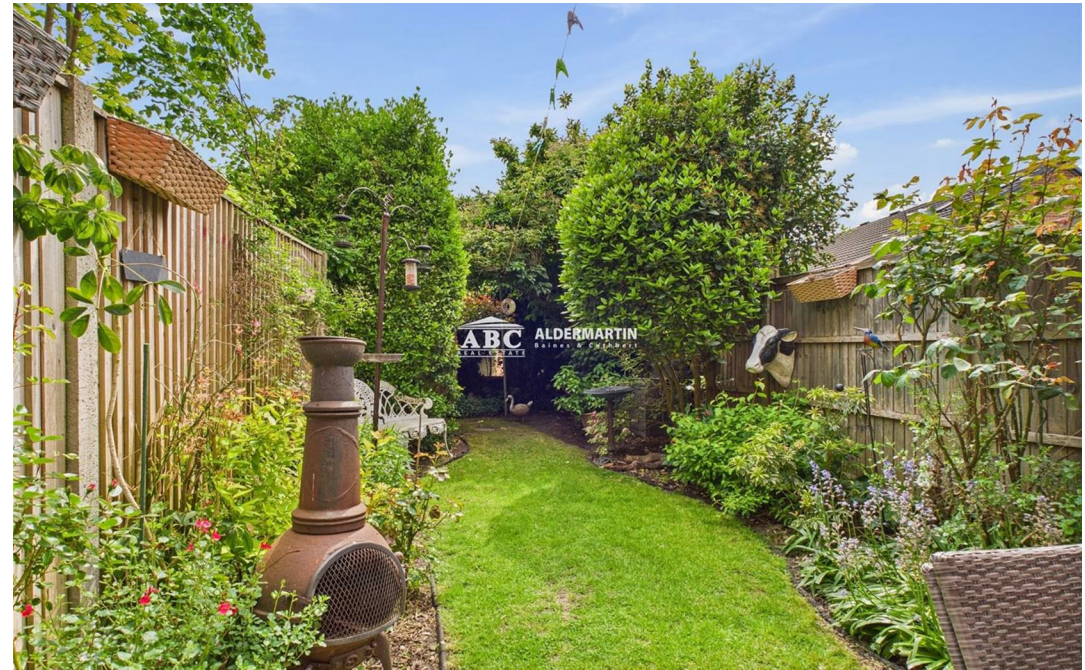
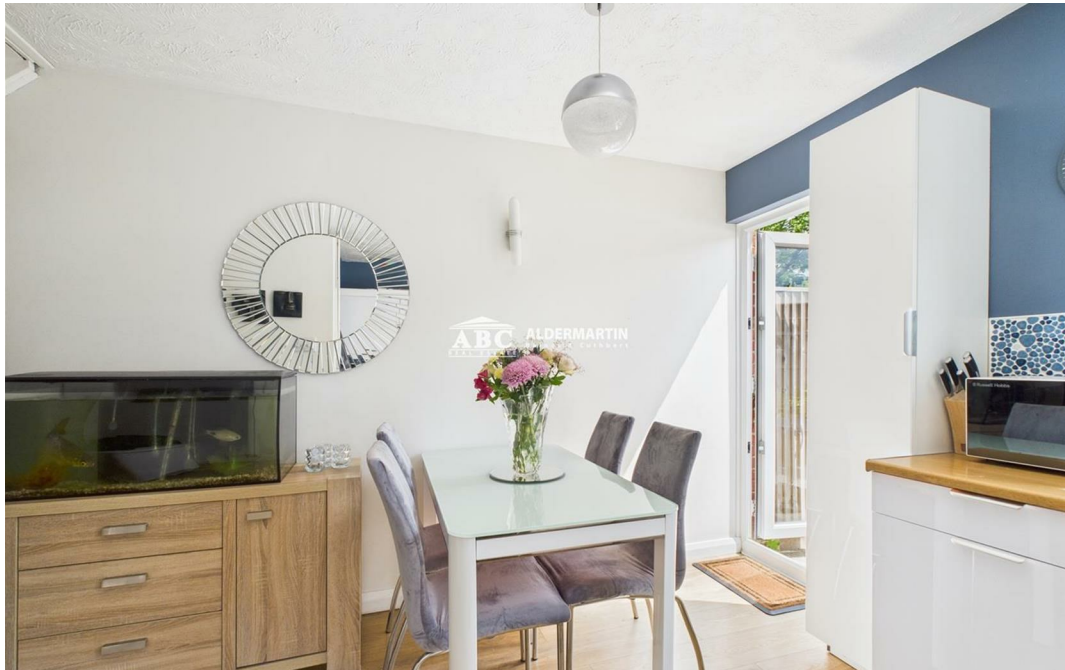
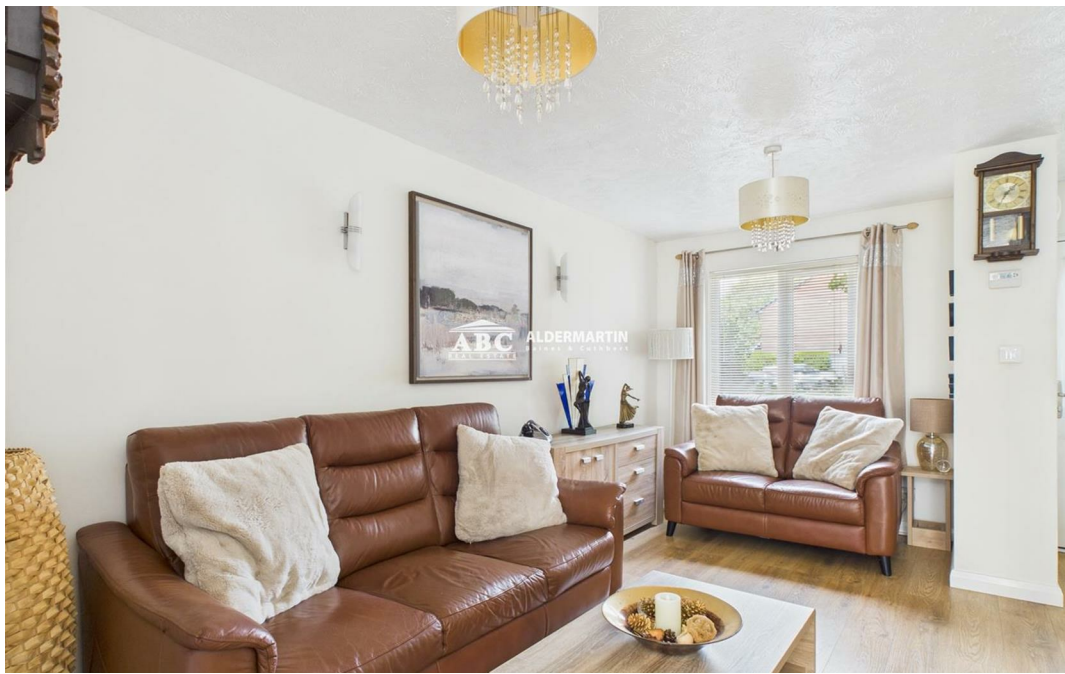




HUTTON ROW, EDGWARE HA8 9YN

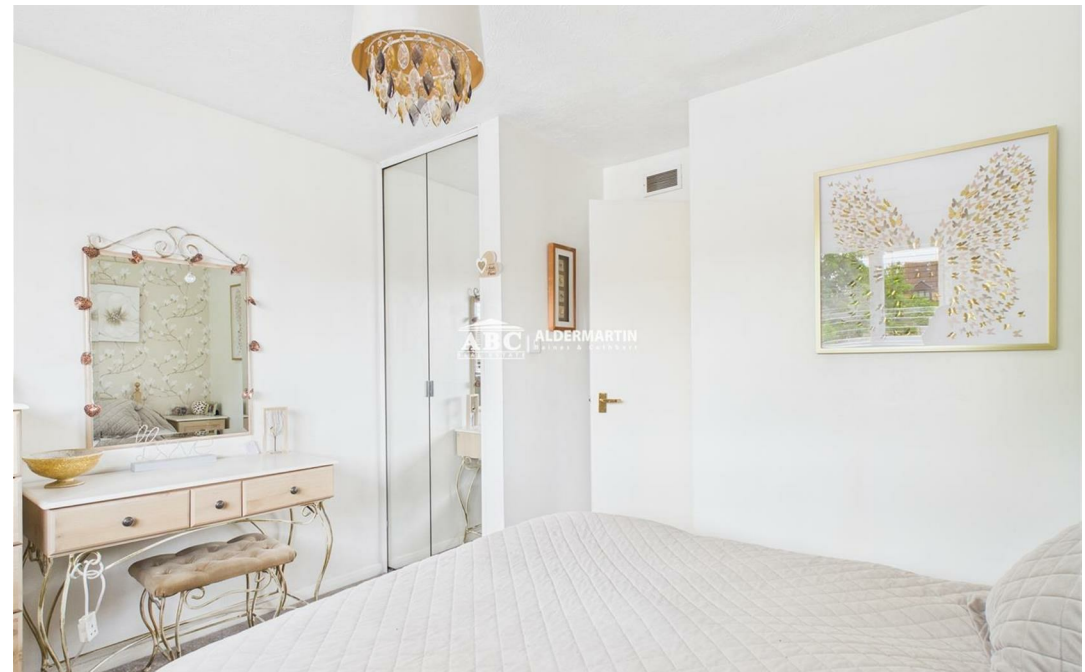
**OFFERS OVER
£449,950 FREEHOLD**



PERFECT FOR FIRST TIME BUYERS



TWO DOUBLE BEDROOMS



- DELIGHTFUL MID-TERRACE FAMILY HOME
- TWO DOUBLE BEDROOMS
- EPC RATING C - COUNCIL TAX BAND C

- PERFECT FOR FIRST TIME BUYERS
- QUIET ROAD, CLOSE TO SHOPS & TRANSPORT
- SUPERB SOUTH FACING REAR GARDEN

- ALLOCATED PARKING
- IMMACULATE CONDITION
- EXCELLENT BUY TO LET INVESTMENT

This delightful and extremely well maintained house is set in a quiet close off Pavilion Way, within easy reach of Edgware's and Burnt Oak's multitude of local amenities.

It offers two double bedrooms, a recently installed fitted kitchen, a comfortable reception room, and a superb south facing rear garden. Another added bonus is allocated off street parking.

This property is competitively priced, and is an ideal opportunity for first time buyers who prefer a Freehold house to a Leasehold flat or maisonette. See it soon!

