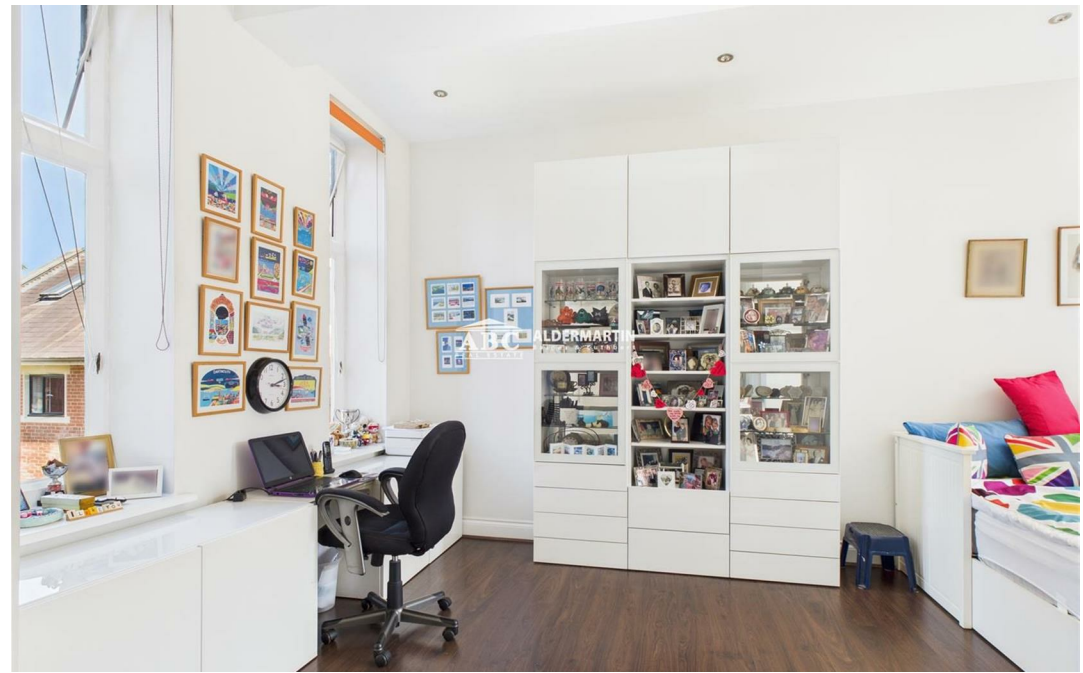


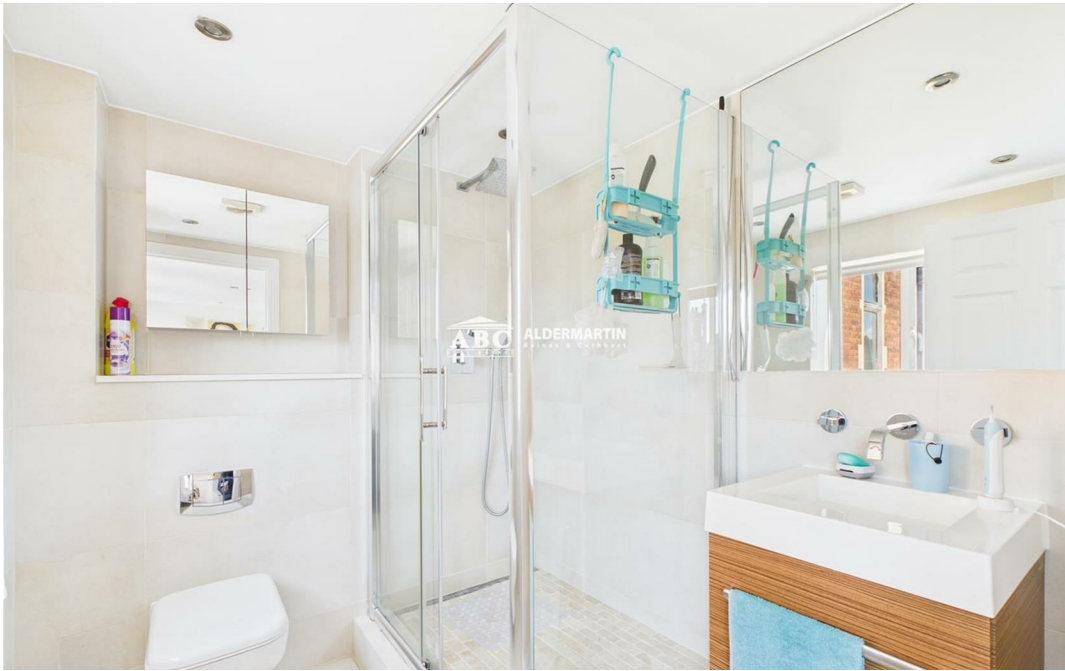
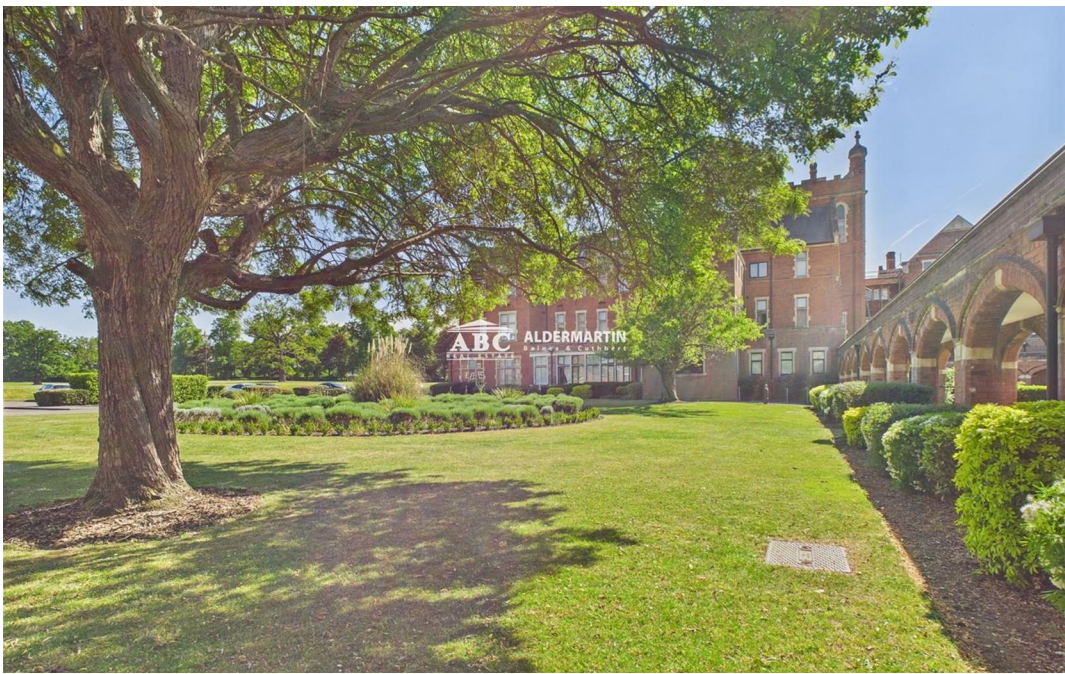


King Edward Place, Bushey WD23 2RH

**£670,000
Leasehold**



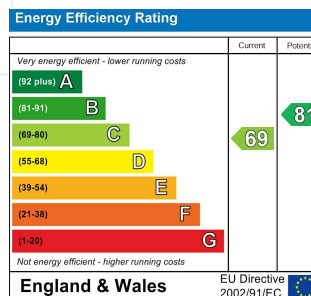




- SUPERB FIRST FLOOR APARTMENT
- 100 ACRES OF MAGNIFICENT GROUNDS
- EXCLUSIVE LOCATION WITH FITNESS CENTRE
- LIFT * ALLOCATED PARKING

- TWO DOUBLE BEDROOMS, BOTH WITH WARDROBES
- IMMACULATE CONDITION
- EPC RATING C * COUNCIL TAX BAND G

- ENSUITE SHOWER + BATHROOM
- IN EXCESS OF 1,330 SQUARE FEET
- 100 YEAR LEASE



This luxurious flat is set in Royal Connaught Park, a location which is steeped in Bushey's long history. It is on the first floor, and can be accessed by either the stairs or the lift. The two double bedrooms both have fitted wardrobes, and the kitchen, which is open plan to the spacious living area, has an abundance of fitted units and work surfaces. The residents have the benefit of the fitness centre, with its gym and swimming pool, and there are tennis courts in the magnificent grounds. A further benefit is two allocated parking spaces, and there are plenty of visitor's parking bays for guests.