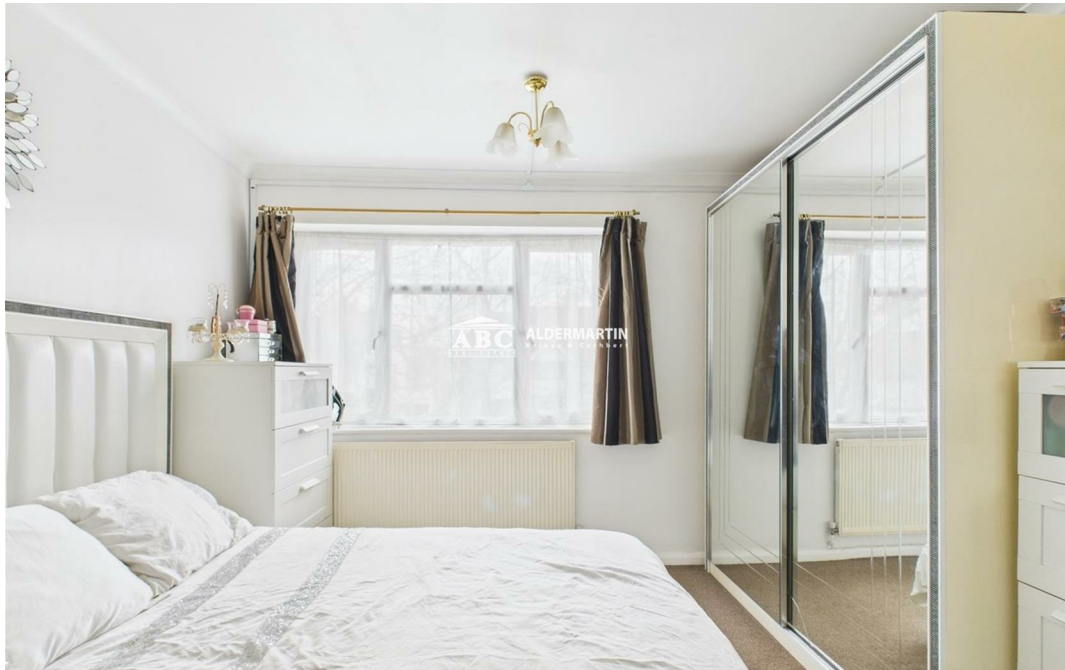


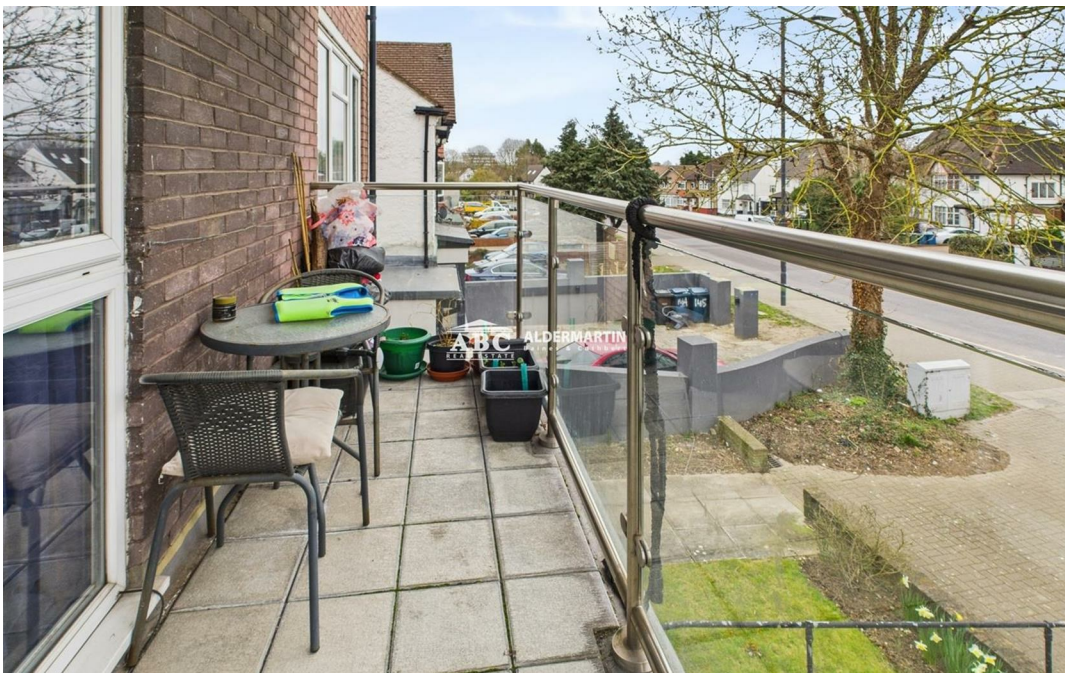


Whitchurch Lane, Edgware HA8 6QR

£375,000
Leasehold



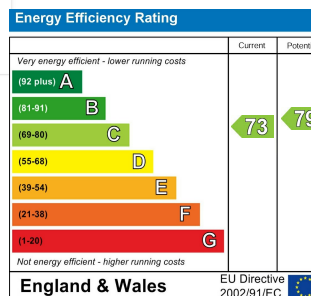
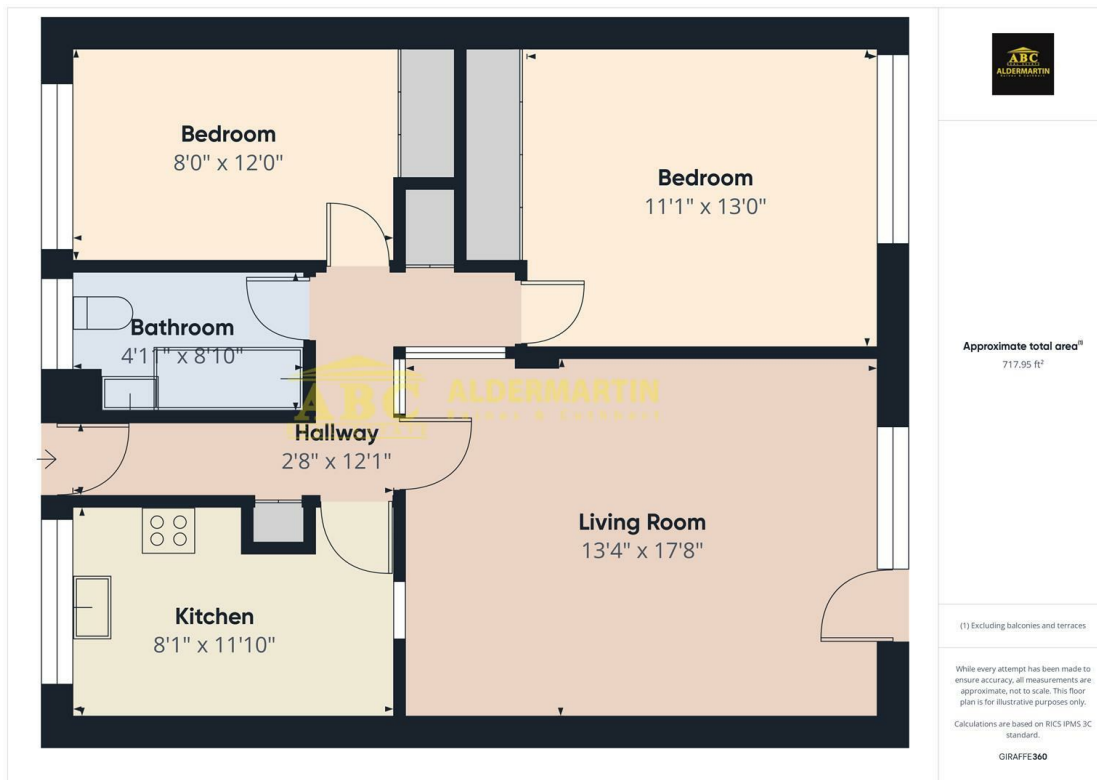




- FIRST FLOOR FLAT
- SEPARATE KITCHEN
- 900 YEAR LEASE

- GOOD CONDITION
- GARAGE + OFF STREET PARKING
- EPC RATING C * COUNCIL TAX BAND C

- TWO DOUBLE BEDROOMS
- CLOSE TO TRANSPORT
- BALCONY



We are delighted to bring to the market as SOLE AGENTS this well presented first floor flat. It is situated on Whitchurch Lane, only a short walk from Canons Park Jubilee Line underground station and shopping parade. Station Road, Edgware with the Northern Line station, and the Boardwalk Shopping Centre is also a short distance away.

Comprising two double bedrooms, a spacious lounge and a separate fitted eat in kitchen, it is an ideal opportunity for a first time purchaser or an investor. Other benefits are communal gardens, a garage and off street parking.

Disclaimer

In accordance with the 1991 Property Misdescriptions Act, these details, photographs, and the floor plan have been prepared in good faith and as a general guide, not a statement of fact. We have not carried out a survey and the services, appliances and specific fittings have not been tested. Measurements are approximate and where possible taken to the widest point. Any information regarding lease details, service charges, ground rent etc. have been supplied by our client and to the best of our knowledge is correct. However, we strenuously recommend that you ask your solicitor to ratify it. For details of our Affiliations, Redress Schemes, Fees, and Complaints Procedure, please visit www.abcestates.co.uk