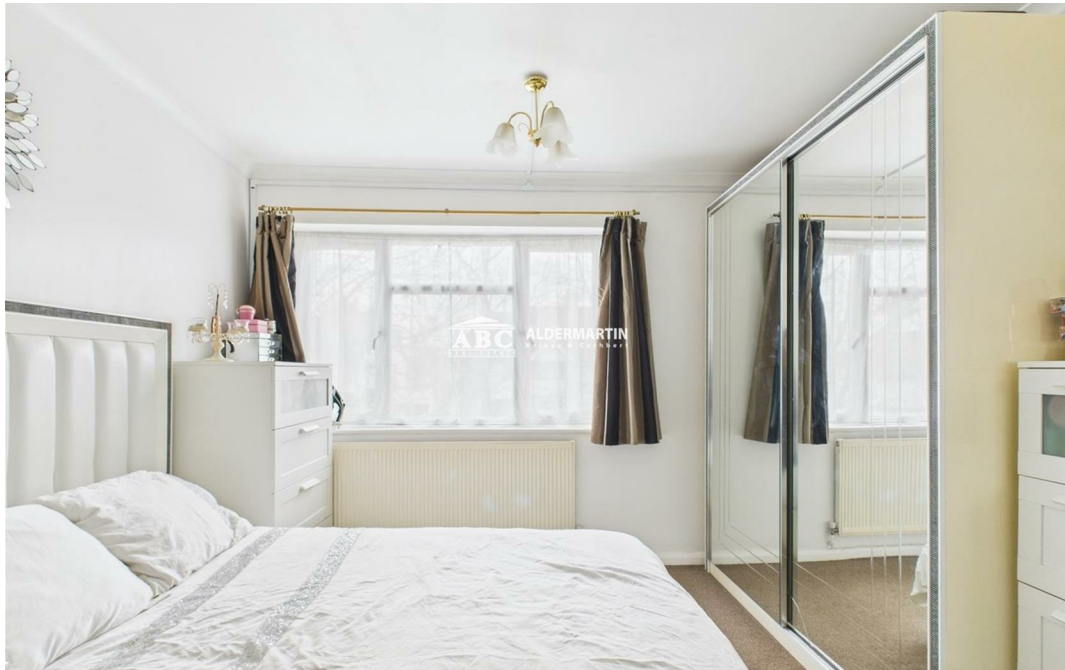
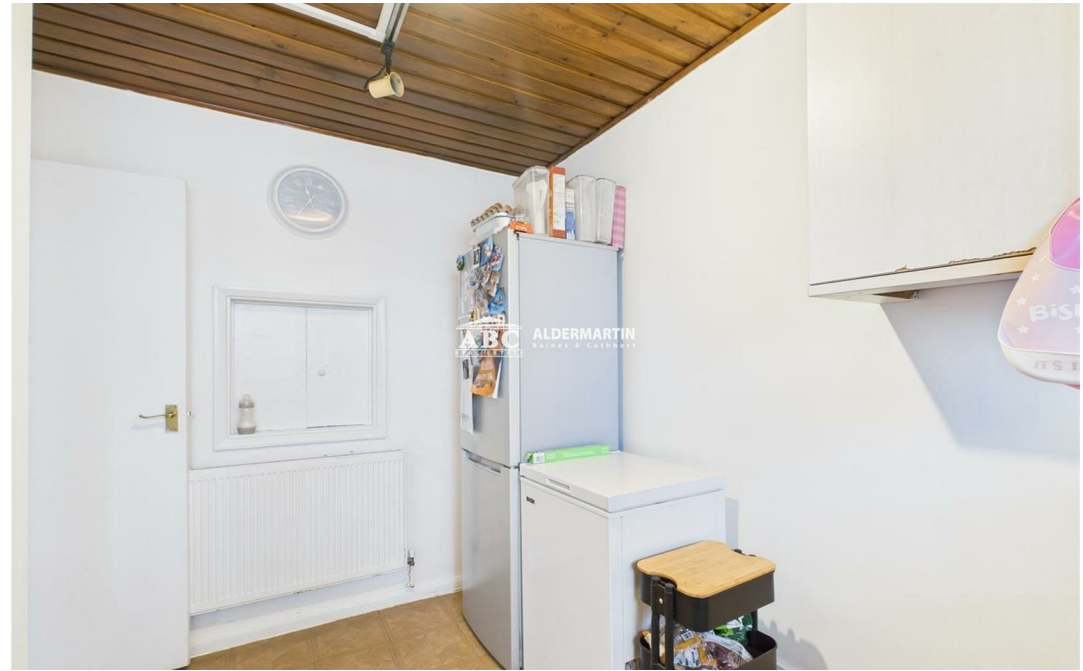
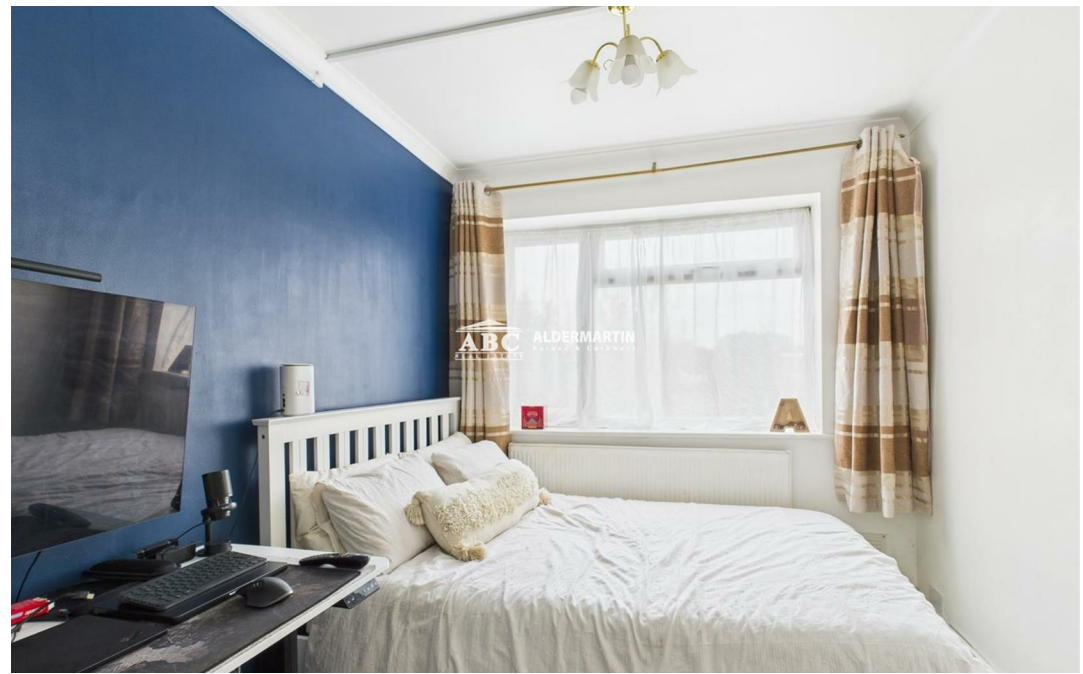


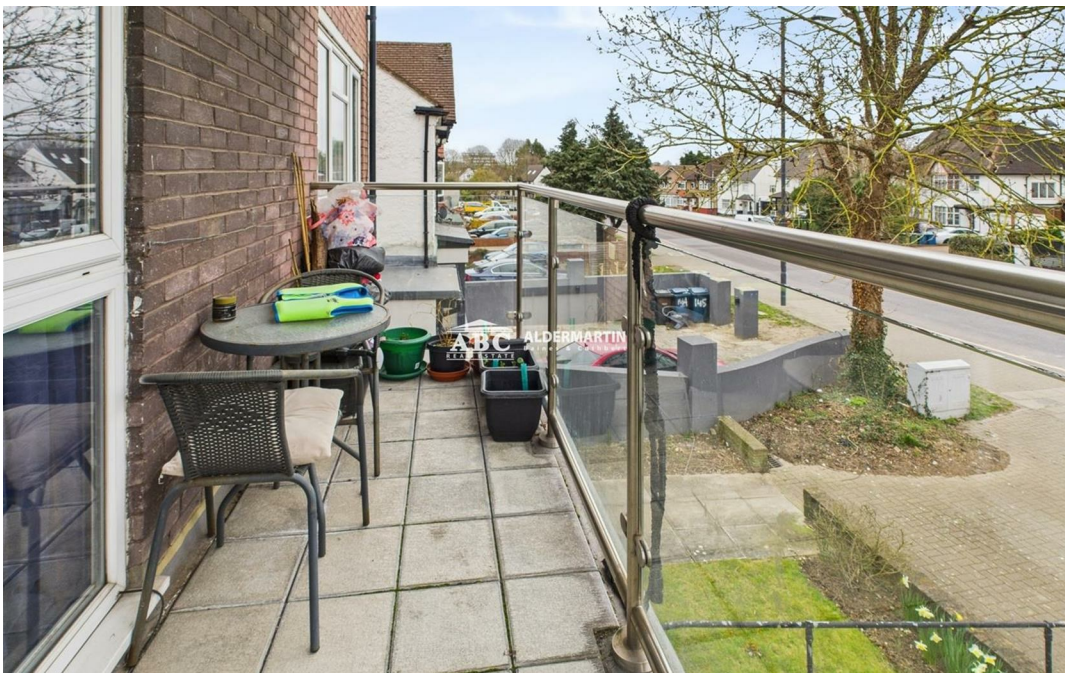


Whitchurch Lane, Edgware HA8 6QR

£375,000
Leasehold







- FIRST FLOOR FLAT
- SEPARATE KITCHEN
- 900 YEAR LEASE

- GOOD CONDITION
- GARAGE + OFF STREET PARKING
- EPC RATING C * COUNCIL TAX BAND C

- TWO DOUBLE BEDROOMS
- CLOSE TO TRANSPORT
- BALCONY

We are delighted to bring to the market as SOLE AGENTS this well presented first floor flat.

It is situated on Whitchurch Lane, only a short walk from Canons Park Jubilee Line underground station and shopping parade. Station Road, Edgware with the Northern Line station, and the Boardwalk Shopping Centre is also a short distance away.

Comprising two double bedrooms, a spacious lounge and a separate fitted eat in kitchen, it is an ideal opportunity for a first time purchaser or an investor. Other benefits are communal gardens, a garage and off street parking.

