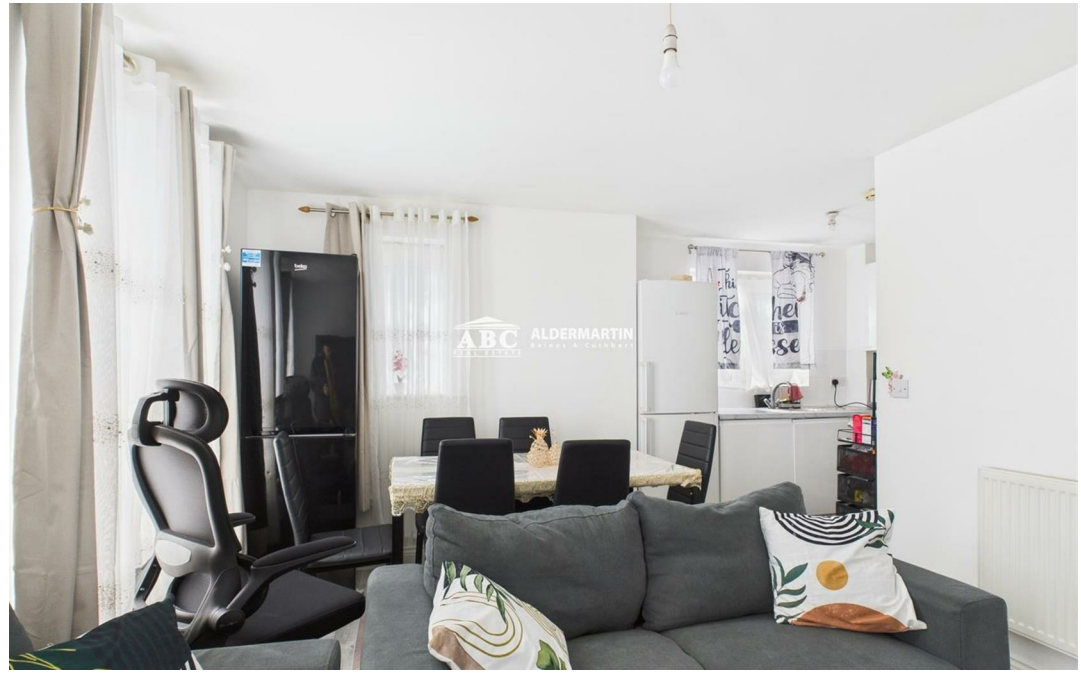
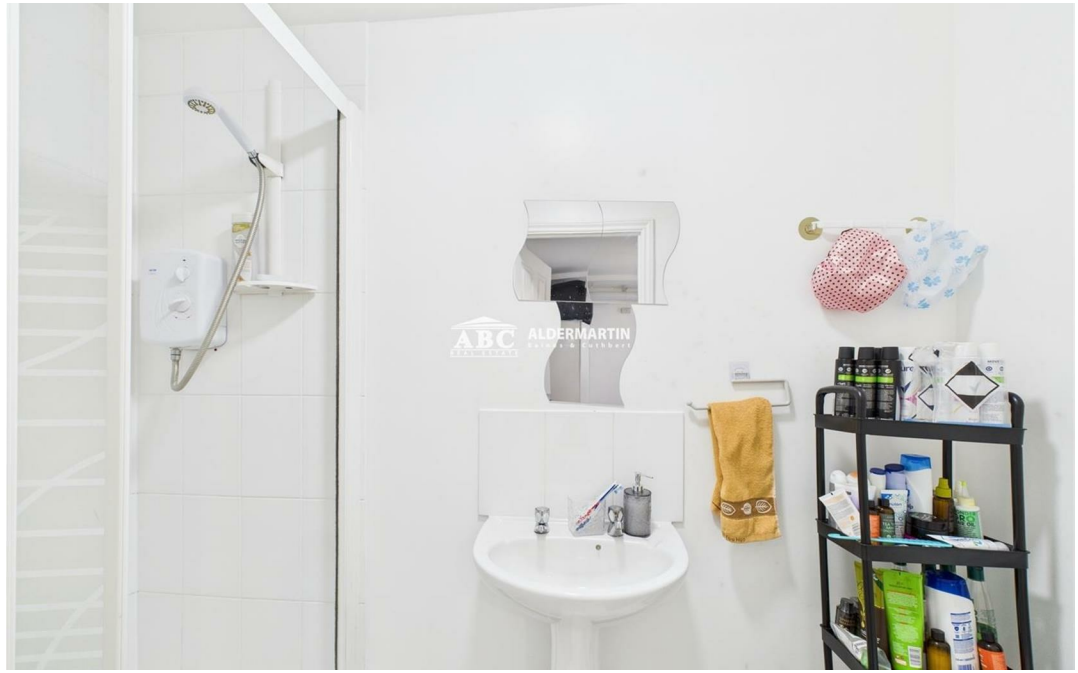
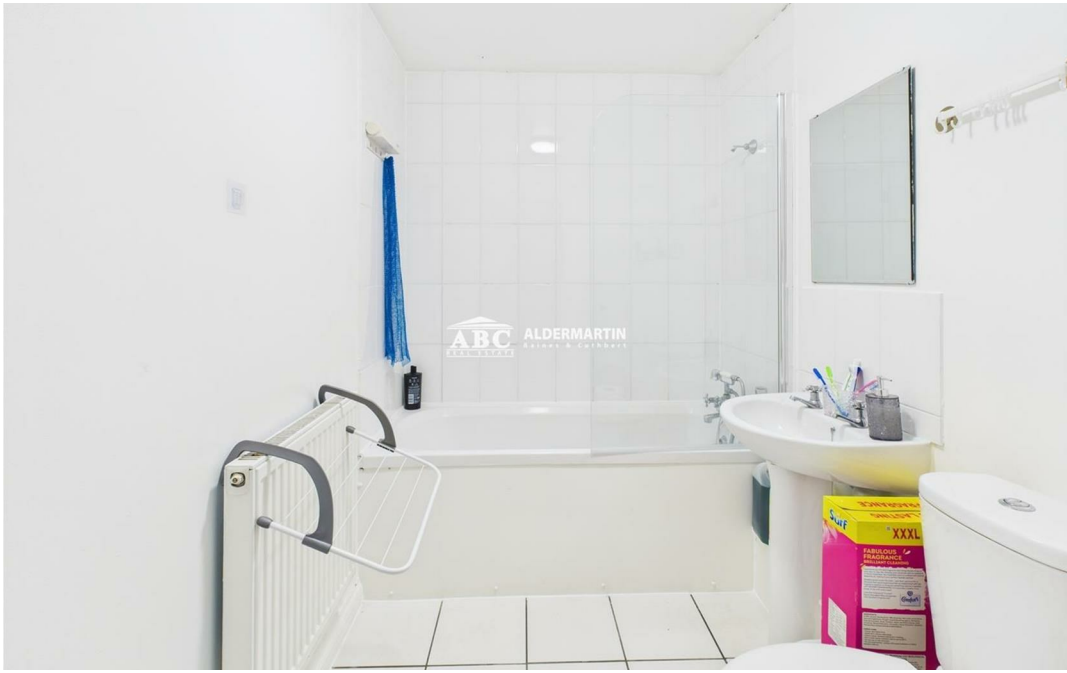
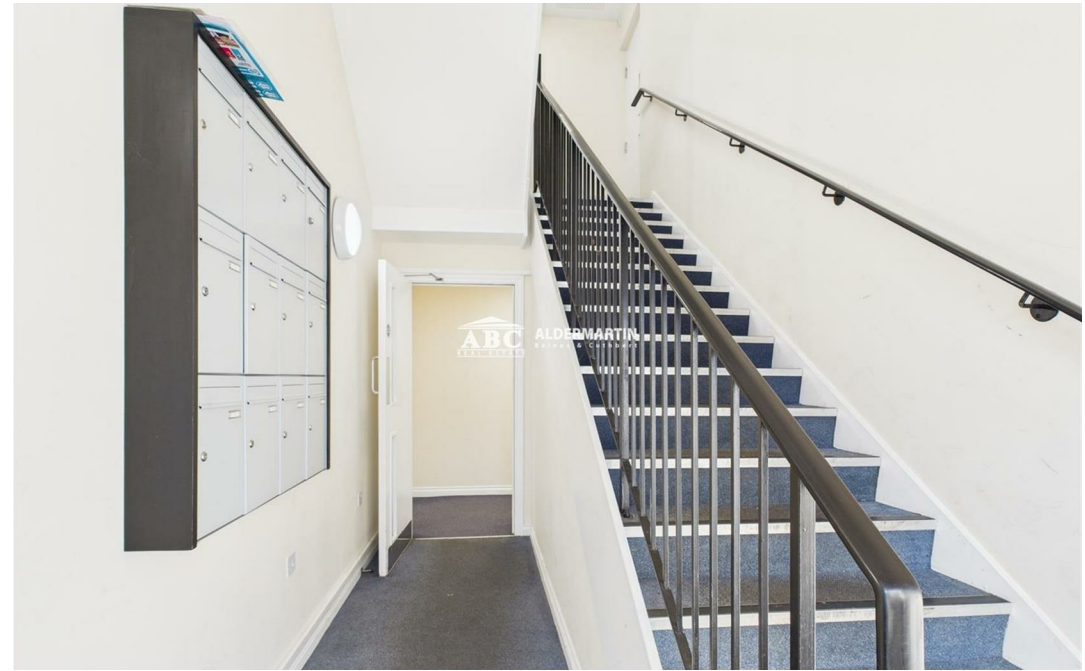


Gateshead Road, WD6 4AY

£329,950
Leasehold







- 2 BEDROOM APARTMENT
- 2 BATHROOMS (1 EN-SUITE)
- SOLE AGENTS

- GROUND FLOOR
- CHAIN FREE
- RECENTLY REFURBISHED

- ALLOCATED OFF STREET PARKING
- COUNCIL TAX BAND D & EPC RATING C

A completely refurbished two double bedroom ground floor flat, in a popular development on Gateshead Road, Borehamwood.

The property has large open plan reception room leading to an offset fitted kitchen, plus a family bathroom, and an en-suite shower-room to the main bedroom.

It is situated almost adjacent to the corner of Brooke Road, a stone's throw from the picturesque Aberford Park with its duck pond and walk-ways. It is also located close to all of the area's many local amenities, including the superb Boulevard Shopping Park.

This is an ideal opportunity for a first time purchaser or an investor.

Lease: In excess of 100 Years Unexpired.

Service Charges: TBC.



Energy Efficiency Rating		Current	Potential
Very energy efficient - lower running costs			
(92 plus) A			
(81-91) B			
(69-80) C			
(55-68) D			
(39-54) E			
(21-38) F			
(1-20) G			
Not energy efficient - higher running costs			
England & Wales		EU Directive 2002/91/EC	

ABC EDGWARE
020 8621 4000
www.abcestates.co.uk

