

Lodge Close, Canons Drive, Edgware HA8 7RL

£350,000
Share of Freehold

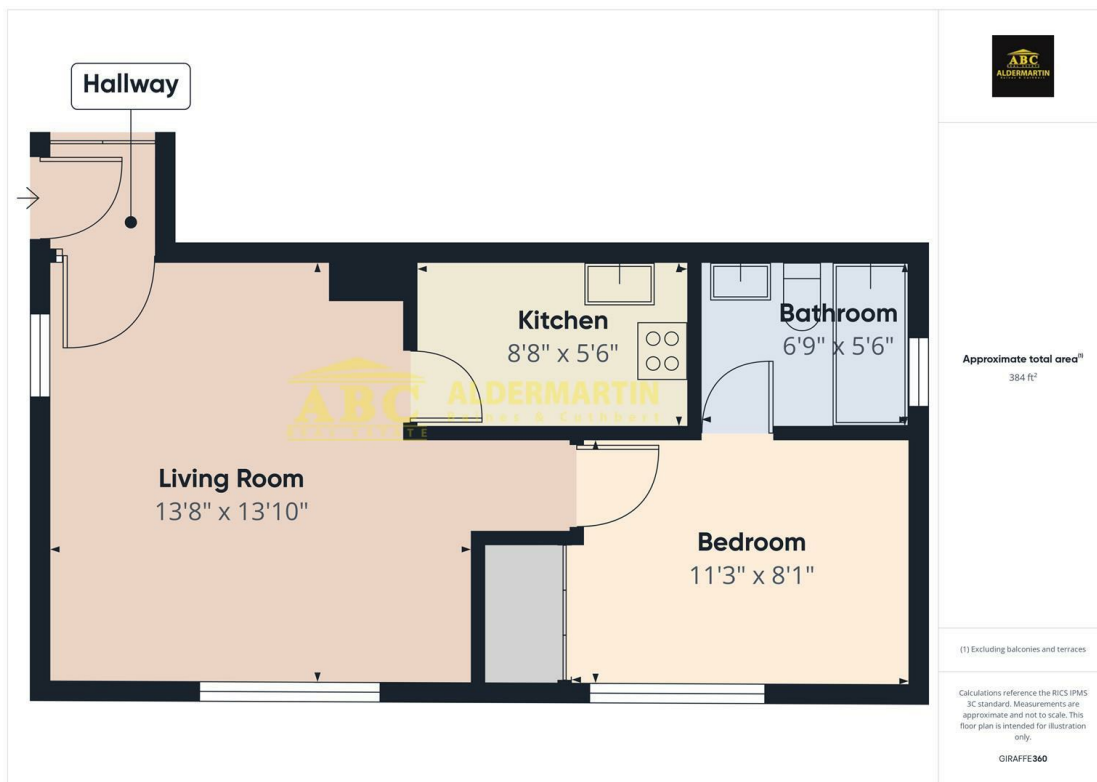




- ONE BEDROOM
- SHARE OF FREEHOLD
- EPC RATING D - COUNCIL TAX BAND D

- EXCLUSIVE LOCATION
- GROUND FLOOR
- REDECORATED THROUGHOUT

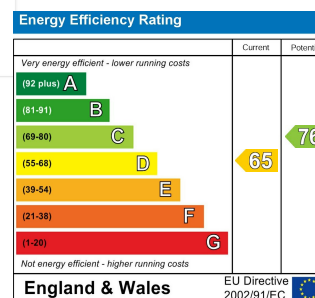
- EN SUITE BATHROOM
- OWN SEPARATE ENTRANCE
- SERVICE CHARGES £500 PER QUARTER



This one bedroom ground floor flat has the added benefit of having its own entrance, separating it from the rest of the block. The flat is currently being redecorated throughout, and will be offered in excellent condition. It is surrounded by superb communal gardens, and is situated on Canons Drive, in Edgware's most sought after and exclusive residential location. Please note that a SHARE OF THE FREEHOLD is included in the sale.

DISCLAIMER:

In accordance with the 1991 Property Misdescriptions Act, these details, photographs, and the floor plan have been prepared in good faith and as a general guide, not a statement of fact. We have not carried out a survey and the services, appliances and specific fittings have not been tested. Measurements are approximate and where possible taken to the widest point. Any information regarding lease details, service charges, ground rent etc. have been supplied by our client and to the best of our knowledge is correct. However, we strenuously recommend that you ask your solicitor to ratify it. For details of our Affiliations, Redress Schemes, Fees, and Complaints Procedure, please visit www.abcestates.co.uk



ABC EDGWARE
020 8621 4000
www.abcestates.co.uk

