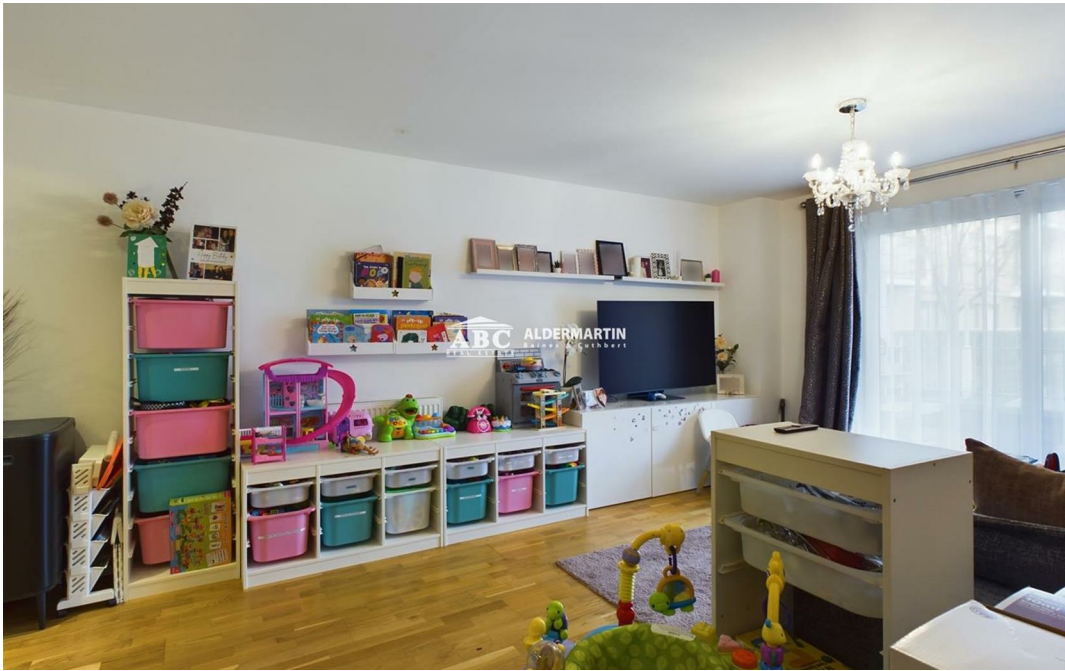


**Zodiac Close, Edgware HA8 5FF**

**£290,000  
Leasehold**



- ONE BEDROOM
- LONG LEASE
- SUPERB FITTED KITCHEN

- QUIET LOCATION
- BALCONY
- LESS THAN 15 YEAR OLD FLAT

- GOOD CONDITION
- PARKING

A stunning first floor 1 bedroom apartment in this modern development close to Edgware and Burnt Oak. Comprising a reception room with open plan fitted kitchen, bathroom, allocated parking space, entry phone system and gas heating. The property is offered with a Long Lease..



# ABC EDGWARE

020 8621 4000

sales@abcestates.co.uk

