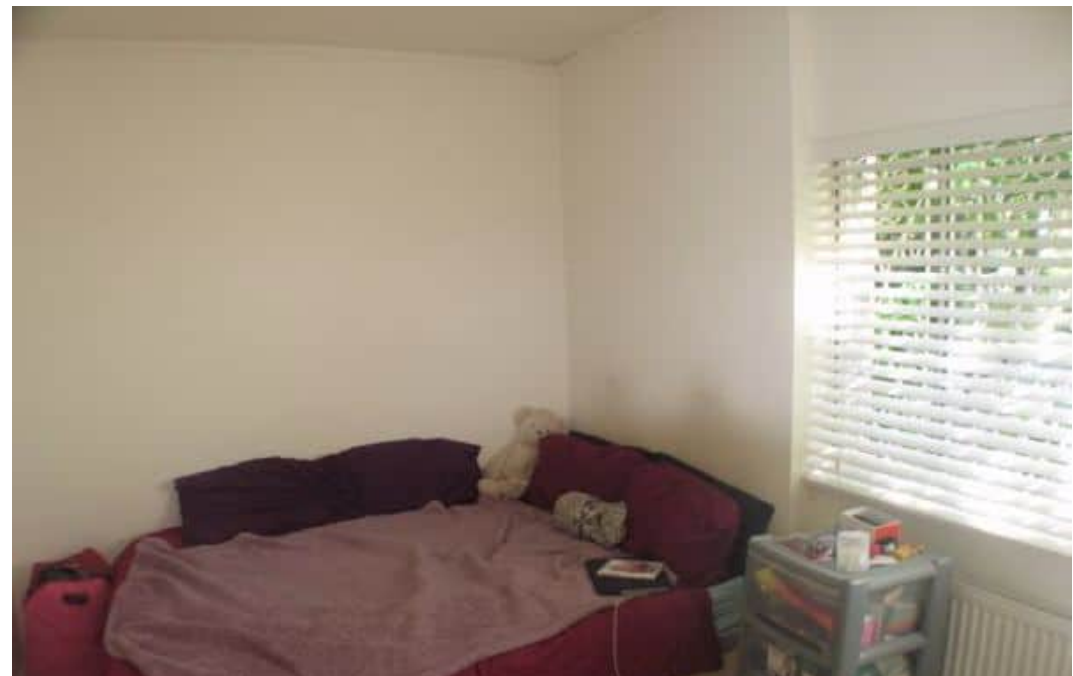




Lodge Close, Canons Drive, Edgware. HA8 7RL

£304,950
Share of Freehold



- ONE BEDROOM
- SHARE OF FREEHOLD

- EXCLUSIVE LOCATION
- GROUND FLOOR

- RECENTLY REFURBISHED
- OWN SEPARATE ENTRANCE



This is a refurbished ground floor flat which has the added benefit of its own entrance which is separate to the main block. The flat has been recently refurbished and is in excellent condition. It is in a superb location, being on one of Edgware's most sought after and exclusive residential roads.