



Carlisle Road, London. NW9 0HD

£55,000



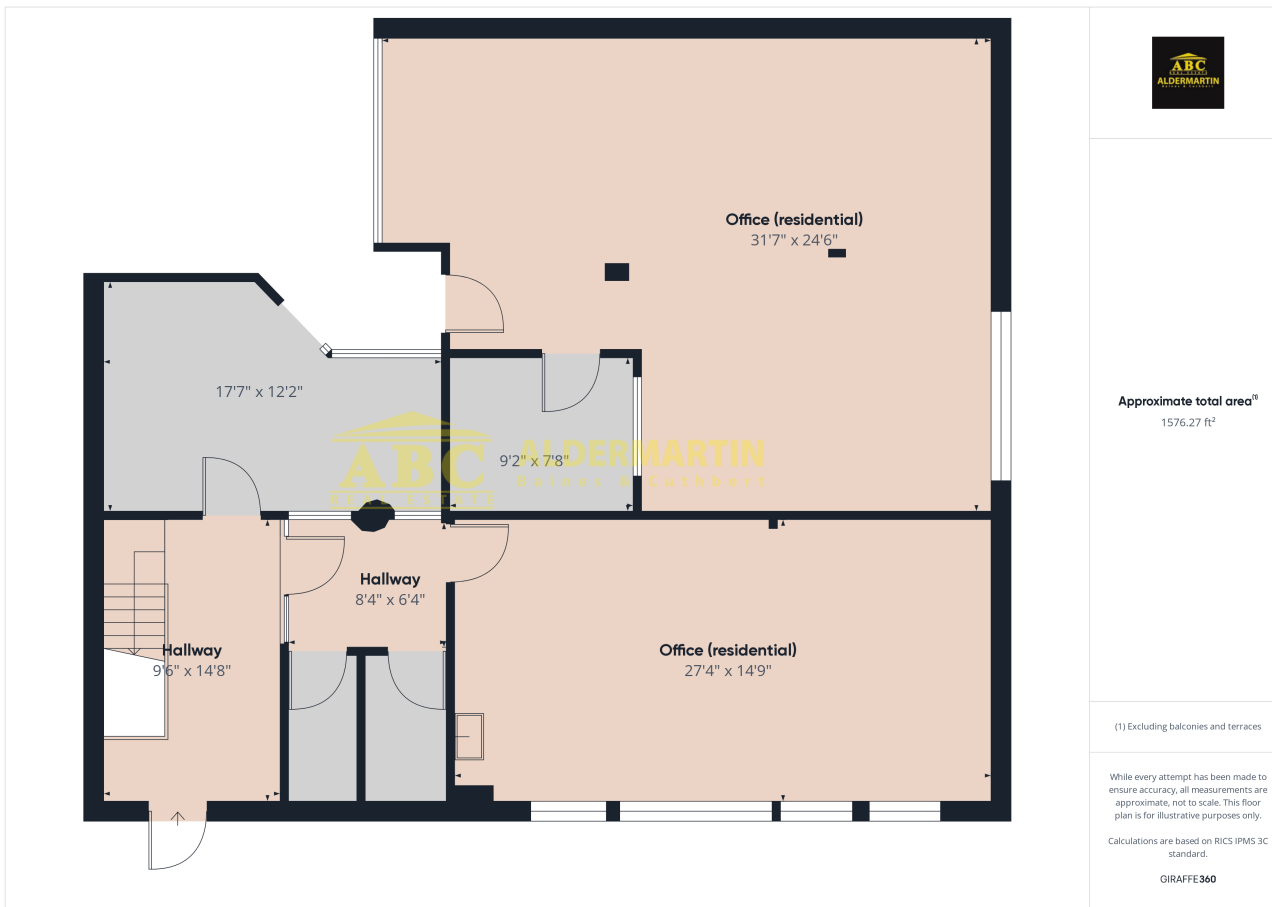




- 2,000 SQUARE FEET
- KITCHEN & WC

- OFFICE SUITE WITH STORAGE
- AIR CONDITIONED

- FLEXIBLE SPACE
- GROUND FLOOR + EASY ACCESS



A ground floor office suite comprising three offices, which could accommodate up to twenty personnel.

The available space occupies around 2,000 square feet.

The premises, which are air conditioned and have high ceilings could potentially be used as offices, a childcare facility, a learning centre, community services, a storage facility, or a multitude of other purposes.

Business Rates and Utility Costs TBC.