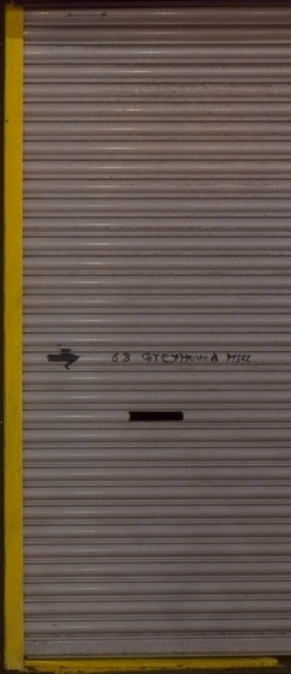


LIGHTING
ERS
www.londoncable.co.uk

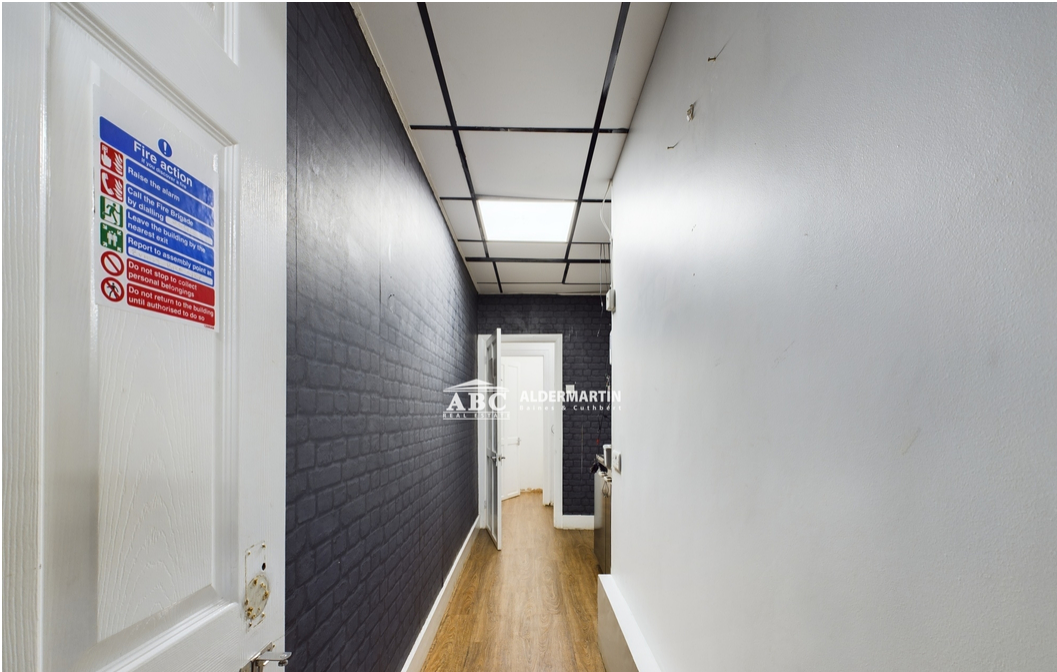


SINS TATTOO STUDIO
CUSTOM TATTOO BOOKINGS & WALK-INS



70 Greyhound Hill, London. NW4 4JB

£350,000
Freehold







- LARGE SPACE
- INVESTMENT

- GREAT LOCATION
- EPC RATING C

- GARDEN
- HIGH FOOT FALL

Freehold shop front available for sale.

Previously used as a Tattoo Parlour, with great foot fall located on a parade of shops off of a main road (A41).

Boasting an abundance of useable space including W/C, rear garden, kitchen area, front and rear offices.

This property is in great condition with great lighting and finish throughout.

EPC Rating C

