



Ealing Road,
Wembley. HA0 4TL



£70,000

Leasehold

This retail unit occupies approximately 980 square feet, and is situated on the extremely busy shopping parade on Ealing Road, Wembley, where premises such as this rarely become available.

Previously trading as a restaurant, there is a large kitchen section at the rear of the property.

Please call ABC on 020 3883 6020 for an appointment to view.

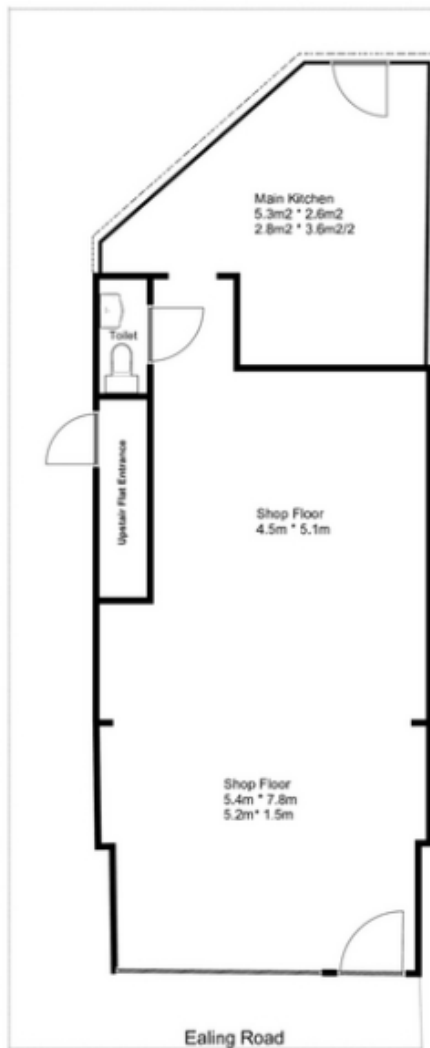




- RESTAURANT USE
- HIGH LEVEL OF FOOTFALL

- REAR ACCESS
- BUSY PRIME LOCATION

- CLOSE TO TRANSPORT
- LARGE CORNER RETAIL UNIT



Ground Floor Sq.m2 73.32 - (Sq.ft 789.20 '')
Rear Unit Sq.m2 17.42 -(Sq.ft 188'')

Total Sq. m 91 m2 (Sq.ft 979'')



Energy Performance Asset Rating

More energy efficient

A+

Net zero CO₂ emissions

A 0-25

B 26-50

C 51-75

D 76-100

E 101-125

F 126-150

G Over 150

Less energy efficient

122 This is how energy efficient the building is

Edgware

02086 214 000

office@abcestates.co.uk